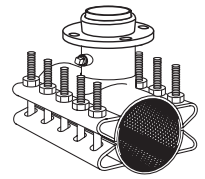


SUBMITTAL INFORMATION

Stainless Steel Tapping Sleeve - (FTSS-xxxx-xx-MJ-Q-U100 style)



TAPPING SLEEVE WITH STAINLESS STEEL OR CARBON STEEL MECHANICAL JOINT OUTLET

MJ Adapter Outlet -
Compatible with AWWA C111
Mechanical Joint Fittings

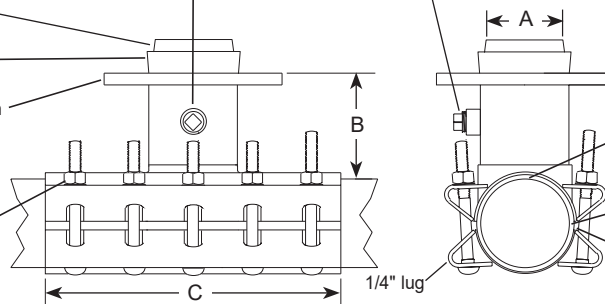
Connecting Gasket - NBR
(Buna-N) per ASTM D2000

Support Ring - Type 316
stainless steel. Optional carbon
steel available

Bolts, Nuts, & Washers - Type
316 stainless steel per ASTM
A193 and A194. Heavy hex
nuts and washers are coated
to prevent galling and
maximize bolt efficiency

Outlet Pipe - Type 316 stainless steel

3/4-14 No-Lead
Brass Test Plug



Outlet Gasket - Virgin NBR (Buna-N) compounded for
water service, per ASTM D2000. Outlet gasket ensures
complete seal of outlet area

Full Gasket - Gridded virgin SBR compounded
for water service, per ASTM D2000. Full gasket
gives 360° pipe coverage

Armors - Hardened heavy gauge stainless steel
are vulcanized to gasket and recessed to bridge
the gap between lugs

NOM. PIPE SIZE	SLEEVE O.D. RANGE (In.)	CATALOG NUMBER	FLANGED OUTLET SIZE	NOM. DIM. - INCHES			MIN. NO. BOLTS	BOLT DIA.	APPROX. WT. (LBS.)	✓ SUBMITTED ITEM(S)
				OUTLET PIPE ID	TOP OF PIPE TO TOP OF FLANGE	WIDTH				
				A	B	C				
14"	15.30-15.70	FTSS-1570-xx-MJ-Q-U100	2	3-1/4	5-3/8	16	10	3/4"	73	
			3	3-1/4	4-15/16	16	10	3/4"	74	
			4	4-1/4	4-15/16	16	10	3/4"	75	
	15.80-16.20	FTSS-1620-xx-MJ-Q-U100	6	6-13/32	5-1/4	16	10	3/4"	82	
			8	8-13/32	5-3/8	20	14	3/4"	102	
	16.48-16.88	FTSS-1688-xx-MJ-Q-U100	10	10-15/32	5-7/8	20	14	3/4"	110	
			12	12-13/32	6	24	16	3/4"	146	
16"	17.20-17.60	FTSS-1760-xx-MJ-Q-U100	14	13-1/2	6-1/8	24	16	3/4"	160	
			2	3-1/4	5-3/8	16	10	3/4"	76	
			3	3-1/4	4-15/16	16	10	3/4"	77	
	17.32-17.80	FTSS-1780-xx-MJ-Q-U100	4	4-1/4	4-15/16	16	10	3/4"	78	
			6	6-13/32	5-1/4	16	10	3/4"	84	
	17.75-18.15	FTSS-1815-xx-MJ-Q-U100	8	8-13/32	5-3/8	20	14	3/4"	104	
			10	10-15/32	5-7/8	20	14	3/4"	114	
	18.15-18.62	FTSS-1862-xx-MJ-Q-U100	12	12-13/32	6	24	16	3/4"	150	
			14	13-1/2	6-1/8	24	16	3/4"	188	
	18.80-19.20	FTSS-1920-xx-MJ-Q-U100	16	15-1/2	6-1/8	32	20	3/4"	195	
18"	19.42-19.92	FTSS-1992-xx-MJ-Q-U100	2	3-1/4	5-3/8	16	10	3/4"	82	
			3	3-1/4	4-15/16	16	10	3/4"	83	
			4	4-1/4	4-15/16	16	10	3/4"	84	
	19.80-20.20	FTSS-2020-xx-MJ-Q-U100	6	6-13/32	5-1/4	16	10	3/4"	90	
			8	8-13/32	5-3/8	20	14	3/4"	112	
			10	10-15/32	5-7/8	20	14	3/4"	120	
			12	12-13/32	6	24	16	3/4"	160	
			14	13-1/2	6-1/8	24	16	3/4"	190	
			16	15-1/2	6-1/8	32	20	3/4"	200	
			18	17-1/2	6-1/8	36	24	3/4"	210	

* For carbon steel outlet, add "A" to the catalog number. Example: The complete FTSS catalog number for a 16" pipe (17.32 O.D.) with a 12" stainless steel MJ outlet is FTSS-1780-12A-MJ-Q-U100. For a carbon steel outlet the number is FTSS-1780-12A-MJ-Q-U100.

Note: Highlighted ranges are recommended for ductile iron pipe, pit cast and C900/C905 pipe applications.

Note: A 1" undersize cutter is required for flanges 14" and larger. Oversize outlets are available by special request.

FEATURES

- Body, straps and hardware are made of type 316 stainless steel. Support ring can be either type 316 stainless steel or ASTM A36 carbon steel. All welds are fully passivated for corrosion resistance
- Certified to ANSI/NSF Standard 61
- Complies with AWWA C223
- 14"-16" rated to 200 psi. 18"-20" rated to 175 psi. 24" rated to 150 psi. Rating not to exceed the pressure rating of the pipe.

The Ford Meter Box Company considers the information in this submittal form to be correct at the time of publication. Item and option availability, including specifications, are subject to change without notice. Please verify that your product information is current. Our standard warranty applies.



The Ford Meter Box Company, Inc.
P.O. Box 443, Wabash, Indiana U.S.A. 46992-0443
Phone: 260-563-3171 / Fax: 800-826-3487
Overseas Fax: 260-563-0167
www.fordmeterbox.com

11/18/22

Submitted By: