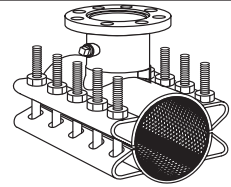


SUBMITTAL INFORMATION

Stainless Steel Tapping Sleeve 30"-36" - (FTSS-xxxx-xx style)



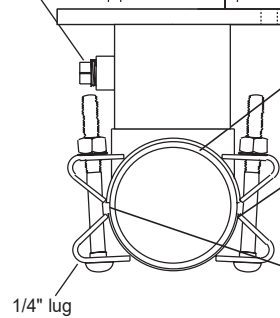
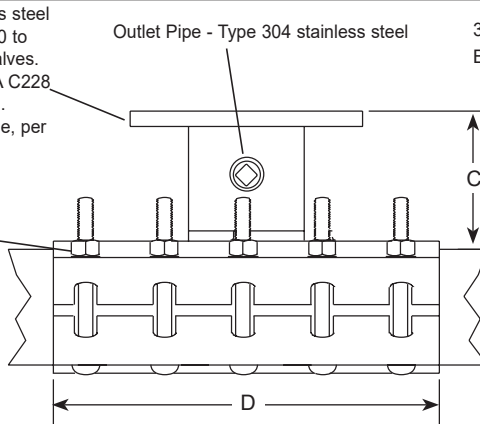
TAPPING SLEEVE WITH STAINLESS STEEL OR CARBON STEEL FLANGE

Flange - Type 304 stainless steel with recess per MSS SP-60 to accept standard tapping valves. Flange conforms to AWWA C228 Class D ANSI 150# drilling. Optional carbon steel flange, per AWWA C207, is available.

Outlet Pipe - Type 304 stainless steel

3/4-14 No-Lead Brass Test Plug

Bolts, Nuts, & Washers - Type 304 stainless steel per ASTM A193 and A194. Heavy hex nuts and washers are coated to prevent galling and maximize bolt efficiency.



Outlet Gasket - Virgin NBR (Buna-N) compounded for water service, per ASTM D2000. Outlet gasket ensures complete seal of outlet area.

Full Gasket - Gridded virgin SBR compounded for water service, per ASTM D2000. Full gasket gives 360° pipe coverage.

Armors - Hardened heavy gauge stainless steel are vulcanized to gasket and recessed to bridge the gap between lugs.

NOM. PIPE SIZE	SLEEVE O.D. RANGE (IN.)	FLANGED OUTLET SIZE	NOMINAL DIMENSIONS - INCHES				MIN. NO. OF BOLTS	BOLT DIA. (IN.)	APPROX. WT. (LBS.)	*SLEEVE NUMBER	✓ SUBMITTED ITEM(S)
			COUNTER-BORE ID	OUTLET PIPE ID	TOP OF PIPE TO TOP OF FLANGE	WIDTH					
			A	B	C	D					
30"	29.70-30.20	2	3-1/16	3-1/4	5-1/16	16	10	3/4	211	FTSS-3020-xx	
		3	4-1/16	3-1/4	5-1/16	16	10	3/4	212		
		4	5-1/16	4-1/4	5-1/16	16	10	3/4	254	FTSS-3080-xx	
	30.40-30.80	6	7-1/16	6-13/32	5-1/16	16	10	3/4	192		
		8	9-1/16	8-13/32	5-1/16	20	14	3/4	209	FTSS-3222-xx	
	31.72-32.22	10	11-1/16	10-15/32	5-1/16	20	14	3/4	274		
		12	13-1/16	12-13/32	5-1/16	24	16	3/4	344	FTSS-3227-xx	
	32.30-32.80	14	15-9/32	13-1/2	6-1/8	24	16	3/4	418		
		16	17-9/32	15-1/2	6-1/8	32	20	3/4	492	FTSS-3280-xx	
	32.60-33.10	18	19-1/2	17-1/2	6-1/8	36	24	3/4	552		
		20	21-1/2	19-1/2	6-1/8	40	24	3/4	623	FTSS-3300-xx	
	33.10-33.60	24	25-1/2	23-1/2	6-1/8	48	28	3/4	747		
36"	34.60-35.10	30	31-1/16	29-9/16	6-1/4	60	36	3/4	1067	FTSS-3360-xx	
		2	3-1/16	3-1/4	5-1/16	16	10	3/4	253		
		3	4-1/16	3-1/4	5-1/16	16	10	3/4	254		
	35.70-36.20	4	5-1/16	4-1/4	5-1/16	16	10	3/4	256	FTSS-3510-xx	
		6	7-1/16	6-13/32	5-1/16	16	10	3/4	260		
	36.10-36.60	8	9-1/16	8-13/32	5-1/16	20	14	3/4	266	FTSS-3620-xx	
		10	11-1/16	10-15/32	5-1/16	20	14	3/4	315		
	37.80-38.30	12	13-1/16	12-13/32	5-1/16	24	16	3/4	397	FTSS-3660-xx	
		14	15-9/32	13-1/2	6-1/8	24	16	3/4	472		
	38.20-38.70	16	17-9/32	15-1/2	6-1/8	32	20	3/4	507	FTSS-3830-xx	
		18	19-1/2	17-1/2	6-1/8	36	24	3/4	630		
	38.60-39.10	20	21-1/2	19-1/2	6-1/8	40	24	3/4	735	FTSS-3870-xx	
		24	25-1/2	23-1/2	6-1/8	48	28	3/4	836		
		30	31-1/16	29-9/16	6-1/4	60	36	3/4	1033	FTSS-3910-xx	
		36	37-1/16	35-9/16	6-1/4	60	36	3/4	1150		

* The complete FTSS catalog number for a 30" pipe (32.00 O.D.) with a 16" stainless steel flange is FTSS-3222-16. For carbon steel flange, add "A" to the catalog number. Example: FTSS-3222-16A.

Note: A 1" undersize cutter is required for flanges 14" and larger. Oversize outlets are available by special request.

Note: Sleeves with 14" and larger flanges have at least two longer starting bolts

FEATURES

- Body, straps and UNC threaded bolts are made of type 304 stainless steel. Flange can be either type 304 stainless steel or ASTM A36 carbon steel. All welds are fully passivated for corrosion resistance.
- Outlet gasket is NBR (Buna-N) per ASTM D2000.
- Other sizes and ranges available. Contact your Ford Meter Box representative for details.
- Certified to ANSI/NSF Standard 61

The Ford Meter Box Company considers the information in this submittal form to be correct at the time of publication. Item and option availability, including specifications, are subject to change without notice. Please verify that your product information is current. Our standard warranty applies.



The Ford Meter Box Company, Inc.

P.O. Box 443, Wabash, Indiana U.S.A. 46992-0443

Phone: 260-563-3171 / Fax: 800-826-3487

Overseas Fax: 260-563-0167

www.fordmeterbox.com

05/23/23

Submitted By: