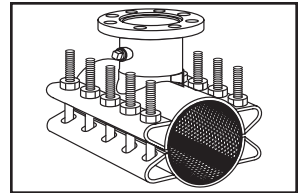


SUBMITTAL INFORMATION

Stainless Steel Tapping Sleeve - (FTSSP-xxxx-x style)



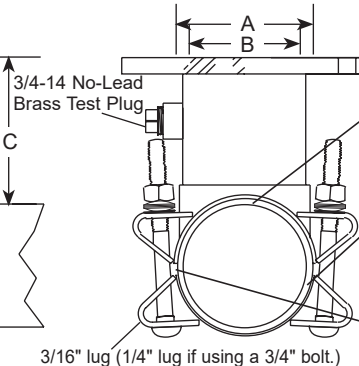
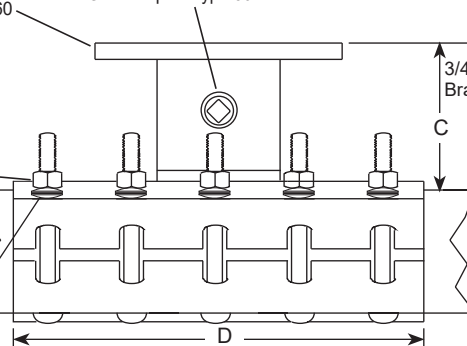
TAPPING SLEEVE WITH STAINLESS STEEL OR CARBON STEEL FLANGE FOR HDPE PIPE

Flange - Type 304 stainless steel with recess per MSS SP60 to accept standard tapping valves. Flange conforms to AWWA C228 Class D ANSI 150# drilling. Optional carbon steel flange, per AWWA C207, is available.

Bolts, Nuts, & Washers - Type 304 stainless steel per ASTM A193 and A194. Heavy hex nuts are coated to prevent galling and maximize bolt efficiency.

Washers - Belleville Spring Washer 17-7 PH Stainless Steel. Quantity may vary.

Outlet Pipe - Type 304 stainless steel



Outlet Gasket - Virgin NBR (Buna-N) compounded for water service, per ASTM D2000. Outlet gasket assures complete seal of outlet area.

Full Gasket - Gridded virgin SBR compounded for water service, per ASTM D2000. Full gasket gives 360° pipe coverage.

Armors - Hardened heavy gauge stainless steel are vulcanized to gasket and recessed to bridge the gap between lugs.

NOM. PIPE SIZE	SLEEVE O.D. RANGE (IN.)	CATALOG NUMBER	FLANGED OUTLET SIZE	NOMINAL DIMENSIONS - INCHES				MIN. NO. BOLTS	BOLT DIA.	APPROX. WT. (LBS.)	✓ SUBMITTED ITEM(S)
				COUNTER-BORE ID	OUTLET PIPE ID	TOP OF PIPE TO TOP OF FLANGE	WIDTH				
14"	14.00	FTSSP-1400-x	2	3-1/16	3-1/4	5-3/8	16	10	3/4"	73	
			3	4-1/16	3-1/4	4-15/16	16	10	3/4"	74	
			4	5-1/16	4-1/4	4-15/16	16	10	3/4"	75	
	15.30	FTSSP-1530-x	6	7-1/16	6-13/32	5-1/4	16	10	3/4"	82	
			8	9-1/16	8-13/32	5-3/8	20	14	3/4"	102	
			10	11-1/16	10-15/32	5-7/8	20	14	3/4"	110	
16"	16.00	FTSSP-1600-x	12	13-1/16	12-13/32	6	24	16	3/4"	146	
			2	3-1/16	3-1/4	5-3/8	16	10	3/4"	76	
			3	4-1/16	3-1/4	4-15/16	16	10	3/4"	77	
	17.40	FTSSP-1740-x	4	5-1/16	4-1/4	4-15/16	16	10	3/4"	78	
			6	7-1/16	6-13/32	5-1/4	16	10	3/4"	84	
			8	9-1/16	8-13/32	5-3/8	20	14	3/4"	104	
18"	18.00	FTSSP-1800-x	10	11-1/16	10-15/32	5-7/8	20	14	3/4"	114	
			12	13-1/16	12-13/32	6	24	16	3/4"	150	
			14	15-9/32	13-1/2	6-1/8	24	16	3/4"	188	
	19.50	FTSSP-1950-x	2	3-1/16	3-1/4	5-3/8	16	10	3/4"	82	
			3	4-1/16	3-1/4	4-15/16	16	10	3/4"	83	
			4	5-1/16	4-1/4	4-15/16	16	10	3/4"	84	
20"	20.00	FTSSP-2000-x	6	7-1/16	6-13/32	5-1/4	16	10	3/4"	90	
			8	9-1/16	8-13/32	5-3/8	20	14	3/4"	112	
			10	11-1/16	10-15/32	5-7/8	20	14	3/4"	120	
	21.75	FTSSP-2175-x	12	13-1/16	12-13/32	6	24	16	3/4"	160	
			14	15-9/32	13-1/2	6-1/8	24	16	3/4"	190	
			16	17-9/32	15-1/2	6-1/8	32	20	3/4"	200	

* For carbon steel flange, add "A" to the catalog number. Example: The complete FTSS catalog number for a 16" pipe (17.40 O.D.) with a 12" stainless steel flange is FTSSP-1740-16. For a carbon steel flange the number is FTSSP-1740-12A. Add "-SP" for options stainless steel test plug.

FEATURES

- Certified to ANSI/NSF Standard 61
- Complies with AWWA C223 and MSS SP-124
- All sleeves fully passivated for corrosion resistance
- Rated for 200 psi sizes 14"-16", 175 psi sizes 18"-20", and 150 psi in 24". Rating not to exceed the pressure rating of the pipe.

The Ford Meter Box Company considers the information in this submittal form to be correct at the time of publication. Item and option availability, including specifications, are subject to change without notice. Please verify that your product information is current. Our standard warranty applies.



The Ford Meter Box Company, Inc.
P.O. Box 443, Wabash, Indiana U.S.A. 46992-0443
Phone: 260-563-3171 / Fax: 800-826-3487
Overseas Fax: 260-563-0167
www.fordmeterbox.com

03/07/23

Submitted By: