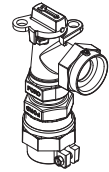
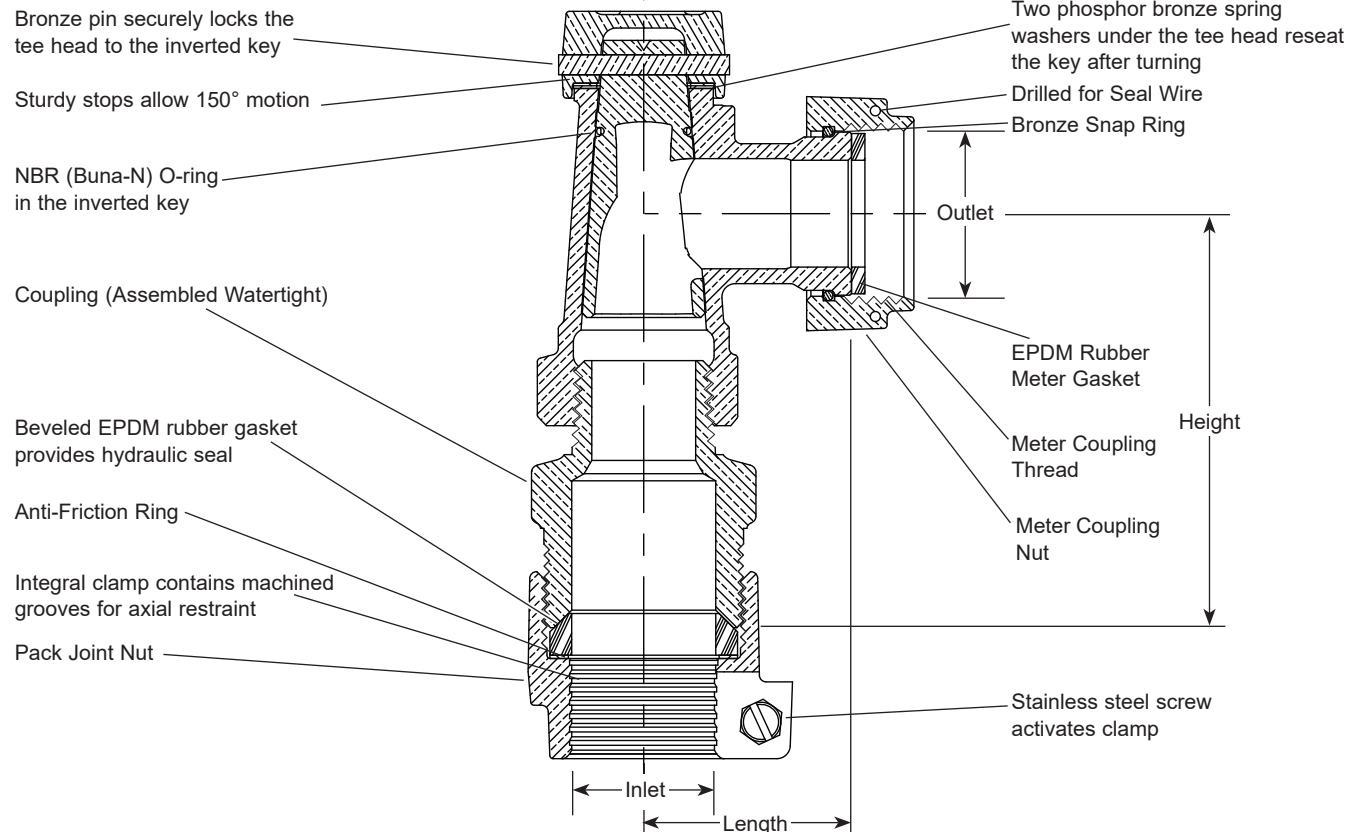


SUBMITTAL INFORMATION

Angle Key Meter Valves - (KV73-xxxW-AWT-NL style)



PACK JOINT FOR PVC PIPE INLET BY METER SWIVEL NUT OUTLET, ASSEMBLED WATERTIGHT



VALVE SIZE	SERVICE LINE SIZE INLET	METER SIZE OUTLET	LENGTH (IN.)	HEIGHT (IN.)	APPROX. WT. LBS	PART NUMBER	✓ SUBMITTED ITEM(S)
3/4"	1"	5/8"x3/4" & 3/4"	1-43/64	3-5/8	2.8	KV73-342W-AWT-NL	
1"	1"	1"	1-15/16	3-7/8	3.4	KV73-444W-AWT-NL	

Note: Ford Pack Joints for PVC are only recommended for Schedule 40 and Schedule 80 pipe

FEATURES

- All brass that comes in contact with potable water conforms to AWWA Standard C800 (ASTM B584, UNS C89833)
- The product has the letters "NL" cast into the main body for lead-free identification
- Brass components that do not come in contact with potable water conform to AWWA Standard C800 (ASTM B62 and ASTM B584, UNS C83600, 85-5-5-5)
- Padlock Wing for locking the valve in a closed position
- Meets 100 PSI working pressure requirements of AWWA Standard C800
- Ends are integral or secured with adhesive to prevent unintentional disassembly

The Ford Meter Box Company considers the information in this submittal form to be correct at the time of publication. Item and option availability, including specifications, are subject to change without notice. Please verify that your product information is current. Our standard warranty applies.



The Ford Meter Box Company, Inc.
P.O. Box 443, Wabash, Indiana U.S.A. 46992-0443
Phone: 260-563-3171 / Fax: 800-826-3487
Overseas Fax: 260-563-0167
www.fordmeterbox.com

12/17/25

Submitted By: