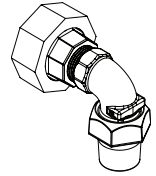
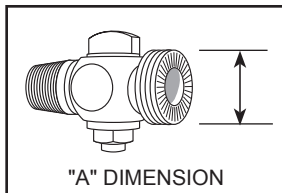
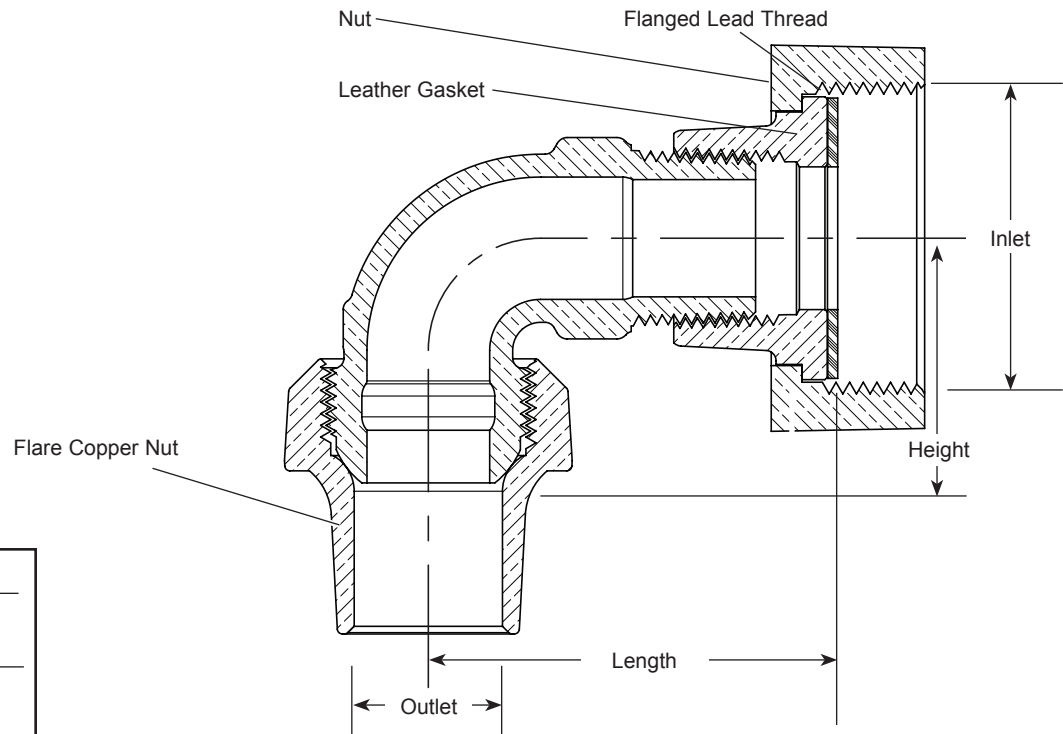


SUBMITTAL INFORMATION

ELL for Flanged Lead Corporation Stops - (LLFSC-2-33-AWT-NL)



FEMALE FLANGED LEAD THREAD INLET BY FLARE COPPER OUTLET, ASSEMBLED WATER TIGHT



DESCRIPTION		APPROX. "A" DIMENSION	LENGTH	HEIGHT	APPROX. WT. LBS	PART NUMBER	✓ SUBMITTED ITEM(S)
INLET SIZE/TYPE	OUTLET SIZE						
3/4" XS	3/4"	1-7/8"	2-7/16"	1-1/2"	1.5	LLFSC-2-33-AWT-NL	

FEATURES

- All brass that comes in contact with potable water conforms to AWWA Standard C800 (ASTM B584, UNS C89833)
- The product has the letters "NL" cast into the main body for lead-free identification
- Brass components that do not come in contact with potable water conform to AWWA Standard C800 (ASTM B62 and ASTM B584, UNS C83600, 85-5-5-5)
- Replaces flanged lead gooseneck connections
- Leather gasket included
- Ends are integral or secured with adhesive to prevent unintentional disassembly

The Ford Meter Box Company considers the information in this submittal form to be correct at the time of publication. Item and option availability, including specifications, are subject to change without notice. Please verify that your product information is current. Our standard warranty applies.



The Ford Meter Box Company, Inc.
P.O. Box 443, Wabash, Indiana U.S.A. 46992-0443
Phone: 260-563-3171 / Fax: 800-826-3487
Overseas Fax: 260-563-0167
www.fordmeterbox.com

11/3/22

Submitted By: