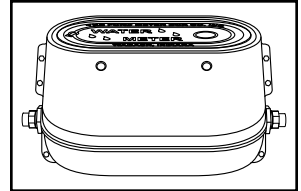


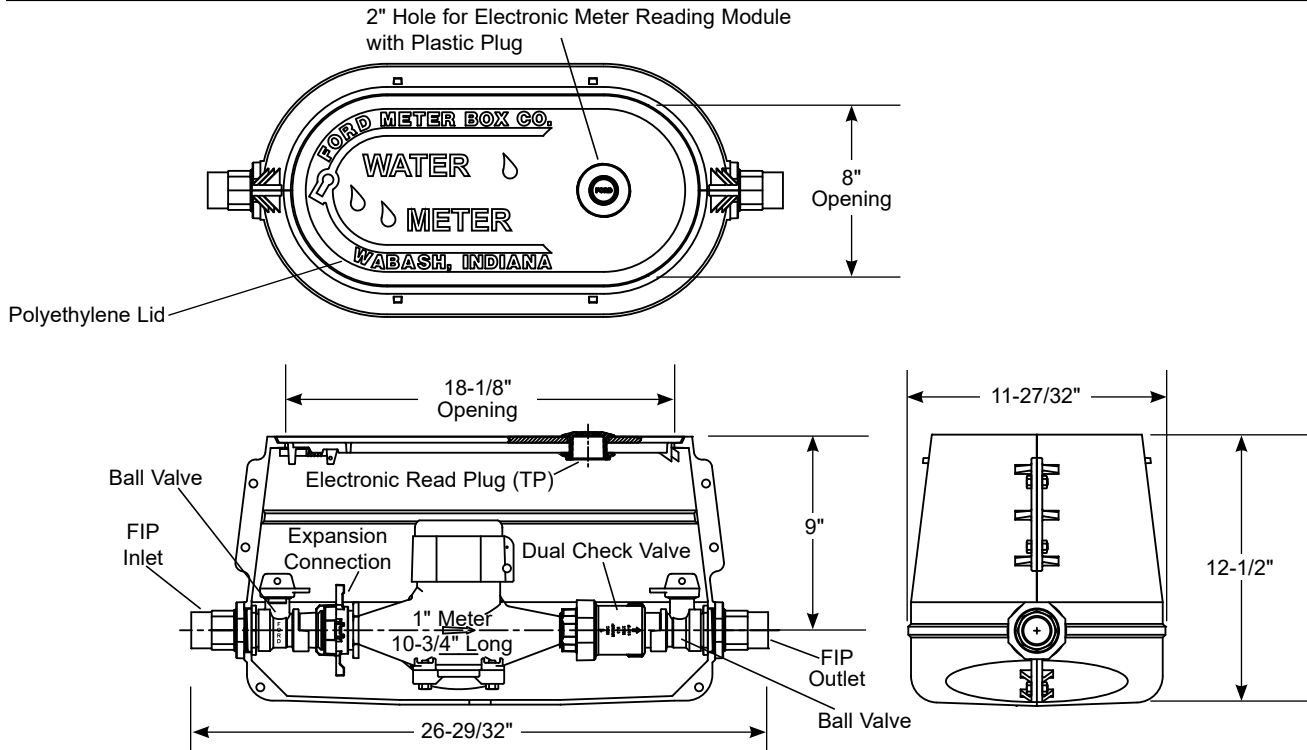
SUBMITTAL INFORMATION

Long Yokebox - (LYLBB111-444-P-PTP-NL style)



FEMALE IRON PIPE THREAD INLET AND OUTLET

STRAIGHT BALL VALVE BY STRAIGHT DUAL CARTRIDGE CHECK VALVE AND STRAIGHT BALL VALVE



| METER SIZE | FIP INLET | FIP OUTLET | APPROX. Wt. LBS. | CATALOG NUMBER | ✓ SUBMITTED ITEM(S) |
|------------|-----------|------------|------------------|-----------------------|---------------------|
| 1" | 1" | 1" | 70 | LYLBB111-444-P-PTP-NL | |

FEATURES

- All brass that comes in contact with potable water conforms to AWWA Standard C800 (ASTM B584, UNS C89833)
- The product has the letters "NL" cast into the main body for lead-free identification
- Brass components that do not come in contact with potable water conform to AWWA Standard C800 (ASTM B62 and ASTM B584, UNS C83600, 85-5-5-5)
- Body casting constructed of cast iron per ASTM A48, Class 25 with black e-coat finish
- The dual cartridge check valve is ASSE 1024 approved.
- Padlock wing is standard on 1" long yokebox ball valves.
- The brass end fittings are permanently and properly spaced and aligned for the meter.
- Black polyethylene locking electronic meter reading lid with plastic plug

The Ford Meter Box Company considers the information in this submittal form to be correct at the time of publication. Item and option availability, including specifications, are subject to change without notice. Please verify that your product information is current. Our standard warranty applies.



The Ford Meter Box Company, Inc.
P.O. Box 443, Wabash, Indiana U.S.A. 46992-0443
Phone: 260-563-3171 / Fax: 800-826-3487
Overseas Fax: 260-563-0167
www.fordmeterbox.com

02/05/20

Submitted By: