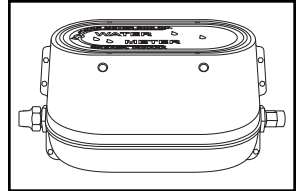


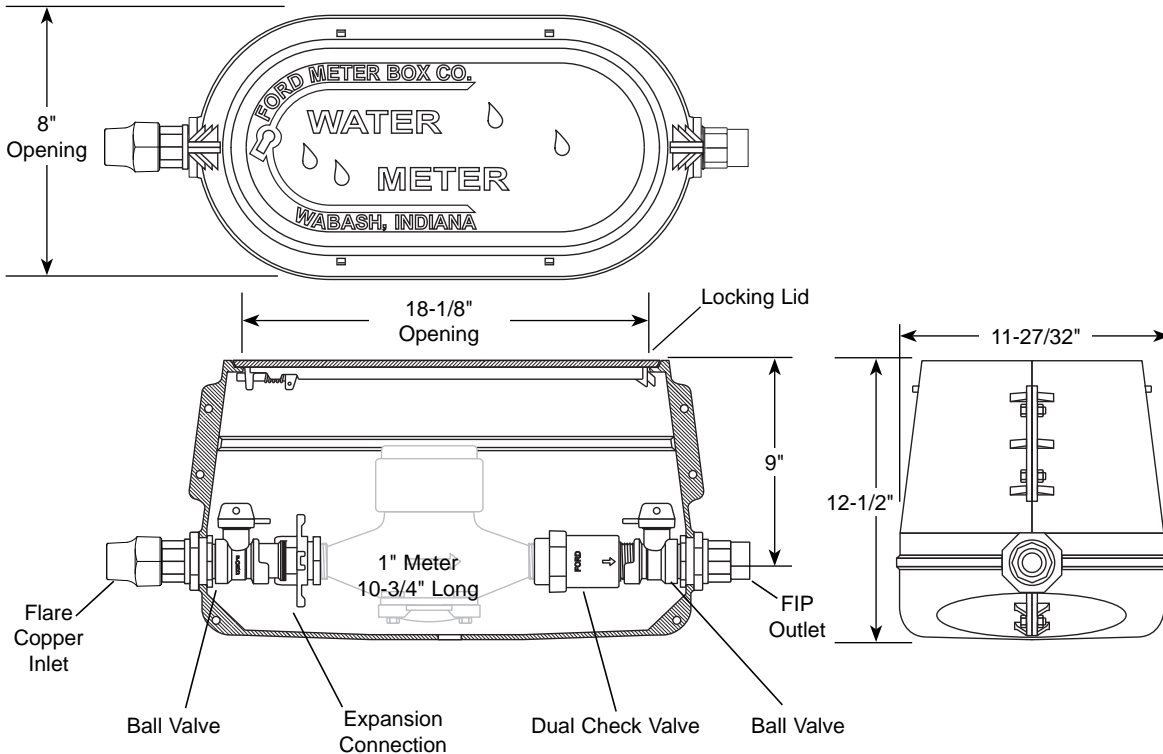
SUBMITTAL INFORMATION

Long Yokebox - (LYLBB121-444-NL style)



FLARE COPPER INLET BY FEMALE IRON PIPE THREAD OUTLET

STRAIGHT BALL VALVE BY STRAIGHT DUAL CARTRIDGE CHECK VALVE AND STRAIGHT BALL VALVE



METER SIZE	FLARE COPPER INLET	FIP OUTLET	APPROX. WT. LBS.	CATALOG NUMBER	✓ SUBMITTED ITEM(S)
1"	1"	1"	77	LYLBB121-444-NL	

FEATURES

- All brass components that come in contact with potable water conform to AWWA Standard C800 (UNS NO C89833)
- The product has the letters "NL" cast into the main body for proper identification
- Brass components that do not come in contact with potable water conform to AWWA Standard C800 (ASTM B-62 and ASTM B-584, UNS NO C83600 - 85-5-5-5)
- Body casting and lid are constructed of cast iron per ASTM A48, Class 25
- The dual cartridge check valve is ASSE 1024 approved
- Padlock wing is standard on 1" Long Yokebox ball valves
- The brass end fittings are permanently and properly spaced and aligned for the meter
- Finish is black e-coating
- Optional Lockless lid is available by adding "-LL" to the end of catalog number

The Ford Meter Box Company considers the information in this submittal form to be correct at the time of publication. Item and option availability, including specifications, are subject to change without notice. Please verify that your product information is current.



The Ford Meter Box Company, Inc.
P.O. Box 443, Wabash, Indiana U.S.A. 46992-0443
Phone: 260-563-3171 / Fax: 800-826-3487
Overseas Fax: 260-563-0167
www.fordmeterbox.com

03/25/14

Submitted By: