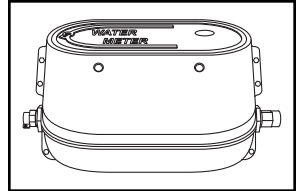


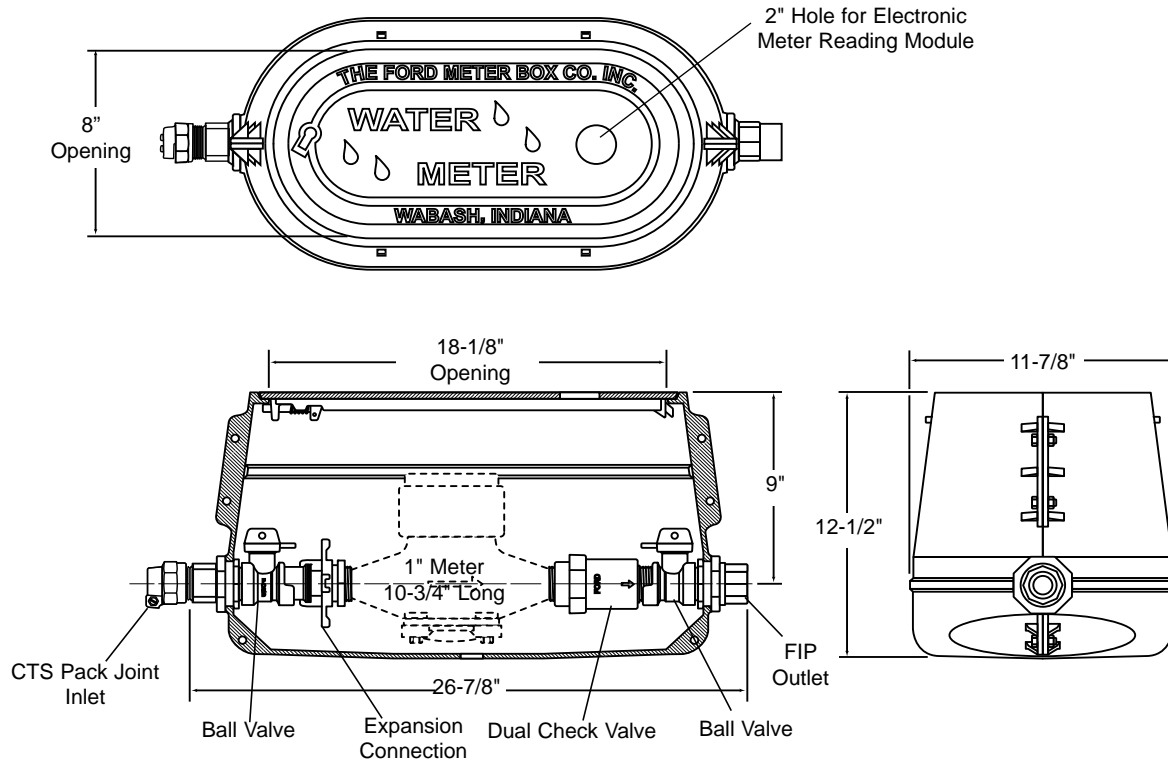
SUBMITTAL INFORMATION

Long Yokebox - (LYLBB141-444-T-NL style)



PACK JOINT FOR COPPER OR PLASTIC TUBING (CTS) INLET BY FEMALE IRON PIPE THREAD OUTLET

STRAIGHT BALL VALVE BY STRAIGHT DUAL CARTRIDGE CHECK VALVE AND STRAIGHT BALL VALVE



METER SIZE	CTS PJ INLET	FIP OUTLET	APPROX. WT. LBS.	CATALOG NUMBER	✓ SUBMITTED ITEM(S)
1"	1"	1"	77	LYLBB141-444-T-NL	

Note: Ford recommends using insert stiffeners with plastic pipe or tubing.

FEATURES

- All brass that comes in contact with potable water conforms to AWWA Standard C800 (ASTM B584, UNS C89833)
- The product has the letters "NL" cast into the main body for lead-free identification
- Brass components that do not come in contact with potable water conform to AWWA Standard C800 (ASTM B62 and ASTM B584, UNS C83600, 85-5-5-5)
- Body casting and locking lid are constructed of cast iron per ASTM A48, Class 25 with black e-coat finish
- The dual cartridge check valve is ASSE 1024 approved
- Padlock wing is standard on 1" long yokebox ball valves
- The brass end fittings are permanently and properly spaced and aligned for the meter
- Locking electronic meter reading lid

The Ford Meter Box Company considers the information in this submittal form to be correct at the time of publication. Item and option availability, including specifications, are subject to change without notice. Please verify that your product information is current.



The Ford Meter Box Company, Inc.
P.O. Box 443, Wabash, Indiana U.S.A. 46992-0443
Phone: 260-563-3171 / Fax: 800-826-3487
Overseas Fax: 260-563-0167
www.fordmeterbox.com

06/18/14

Submitted By: