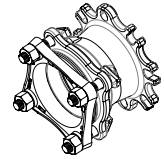


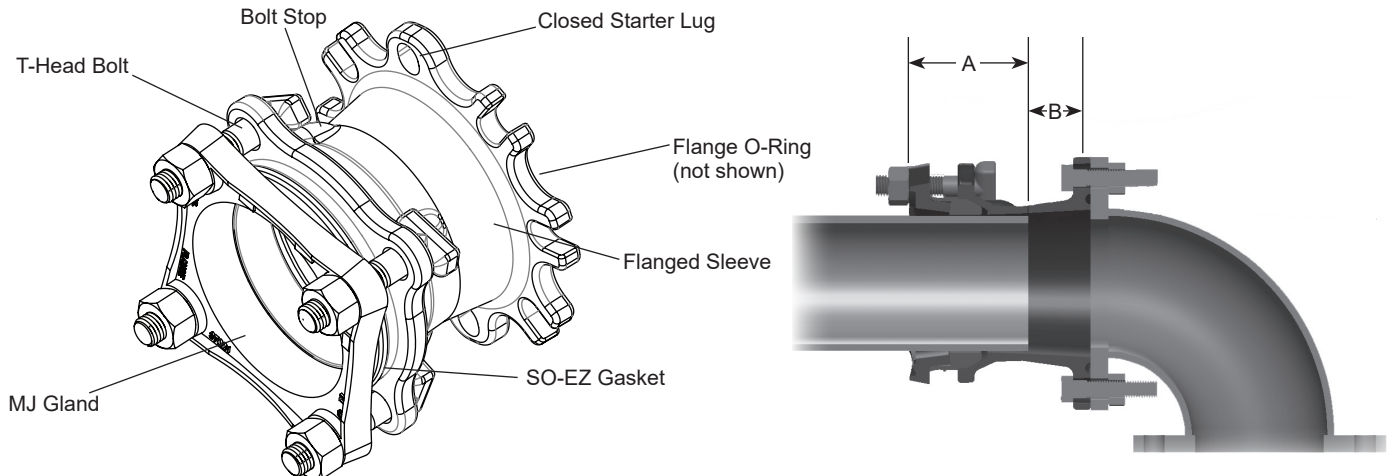
SUBMITTAL INFORMATION

Ductile Iron Mechanical Joint Flange Adapter - (MJFA-xx-I style)



MJFA FLANGE ADAPTER FOR JOINING PLAIN END PIPE TO A FLANGE CONNECTION

FOR DUCTILE IRON, PVC, C909, STEEL AND SDR35 SEWER PIPE APPLICATIONS



NOMINAL PIPE SIZE (IN.)	PIPE O.D. RANGE (IN.)	PIPE O.D. RANGE (MM)	PART NUMBER	MINIMUM PIPE INSERTION DIMENSION "A" (IN.)	PIPE ADJUSTABILITY DIMENSION "B" (IN.)	MAX.DEFLECTION ALLOWANCE	APPROX. WT. LBS	✓ SUBMITTED ITEM(S)
3	3.50 - 3.96	88.9 - 100.6	MJFA-3-I	3-7/8	1-7/8	5°	15	
4	4.21 - 4.80	106.9 - 121.9	MJFA-4-I	4-3/8	2	5°	17	
6	6.27 - 6.90	159.3 - 175.3	MJFA-6-I	4-5/8	2-7/8	5°	34	
8	8.40 - 9.05	213.4 - 229.9	MJFA-8-I	4-11/16	3	5°	41	
10	10.50 - 11.10	266.7 - 281.9	MJFA-10-I	4-11/16	3-3/8	3°	56	
12	12.50 - 13.20	317.5 - 335.3	MJFA-12-I	4-11/16	3-5/8	3°	74	

FEATURES

- Flange Sleeve - Ductile iron per ASTM A536, Grade 65-45-12, black fusion bonded epoxy coated, compatible with Class D or Class E flange, per AWWA C207
- MJ Gland End - Ductile iron per ASTM A536, Grade 65-45-12, black epoxy coating
- T-Head Bolts & Nuts - High strength, low alloy steel per ASTM A242 and AWWA C111
Optional: Blue fluorocarbon or stainless steel
- Flange O-Ring - NBR (Buna-N) per ASTM D2000
- Gasket - SO-EZ gasket, pre-lubricated SBR rubber on sizes 3"-12" to accommodate listed ranges.
Optional NBR (Buna-N) rubber
- Bolt stops are cast on sleeve to prevent T-head bolt from turning during installation
- Closed starter lugs (2) to ease installation
- 4"-12" are stab fit, no disassembly required
- 2:1 safety factor at the full-rated pressure of the pipe on which it is installed

The Ford Meter Box Company considers the information in this submittal form to be correct at the time of publication. Item and option availability, including specifications, are subject to change without notice. Please verify that your product information is current. Our standard warranty applies.



The Ford Meter Box Company, Inc.
P.O. Box 443, Wabash, Indiana U.S.A. 46992-0443
Phone: 260-563-3171 / Fax: 800-826-3487
Overseas Fax: 260-563-0167
www.fordmeterbox.com

09/25/24

Submitted By: