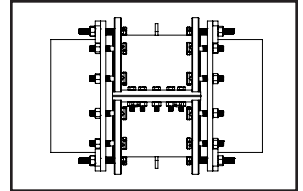
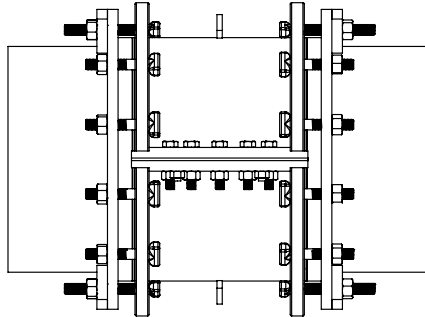


SUBMITTAL INFORMATION

Mechanical Joint Split Coupling - (MJSC-xxxx-F style)



4" - 24" MECHANICAL JOINT SPLIT COUPLING



NOM. PIPE SIZE	*PIPE O.D. (IN.)	APPROX. SLEEVE LENGTH	APPROX. OVERALL LENGTH	MAX. PIPE SEPARATION	CATALOG NUMBER	✓ SUBMITTED ITEM(S)
4"	4.50	10"	12.5"	5"	MJSC-450-F	
	5.00				MJSC-500-F	
6"	6.63				MJSC-663-F	
	7.10				MJSC-710-F	
8"	8.63				MJSC-863-F	
	9.30				MJSC-930-F	
10"	10.75				MJSC-1075-F	
	11.40				MJSC-1140-F	
12"	12.75				MJSC-1275-F	
	13.50				MJSC-1350-F	
14"	14.00				MJSC-1400-F	
	15.65				MJSC-1565-F	
16"	16.00				MJSC-1600-F	
	17.80				MJSC-1780-F	
18"	18.00				MJSC-1800-F	
	19.92				MJSC-1992-F	
20"	20.00				MJSC-2000-F	
	22.06				MJSC-2206-F	
24"	24.00				MJSC-2400-F	
	26.32				MJSC-2632-F	

* Sleeve will accomodate AWWA pipe tolerances.

FEATURES

- Heavy welded steel meeting ASTM A36, 36,000 psi minimum yield
- End hardware - High strength, low alloy per ASTM A242 and AWWA C111
- Clamping hardware - Grade 5, zinc plated
- End seal gaskets - NBR (Buna-N) rubber per ASTM D2000
- End seal gasket compression achieved by fabricated steel compression rings
- End seal gaskets "key-locked" for easy installation
- Finish - NSF 61 approved epoxy
- Alignment pins to ensure proper assembly
- Unique leverage bar sealing system eliminates the need for removing or modifying the side seal gasket during installation
- Rated up to 250 psi on metallic pipe and 150 psi on plastic pipe
- Lifting eye on both sections of split coupling for easier installation

The Ford Meter Box Company considers the information in this submittal form to be correct at the time of publication. Item and option availability, including specifications, are subject to change without notice. Please verify that your product information is current. Our standard warranty applies.



The Ford Meter Box Company, Inc.

P.O. Box 443, Wabash, Indiana U.S.A. 46992-0443

Phone: 260-563-3171 / Fax: 800-826-3487

Overseas Fax: 260-563-0167

www.fordmeterbox.com

11/20/20

Submitted By: