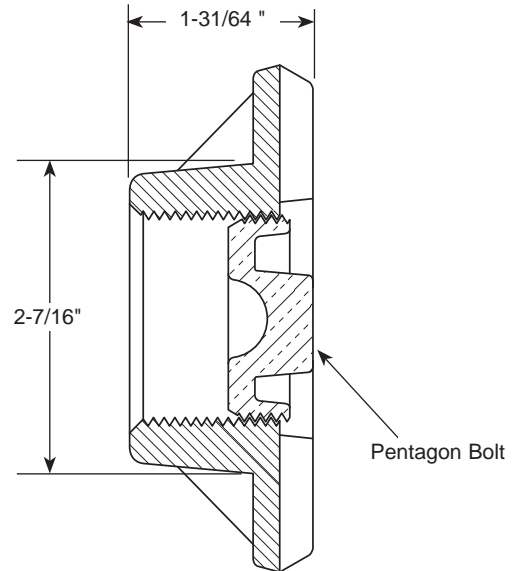
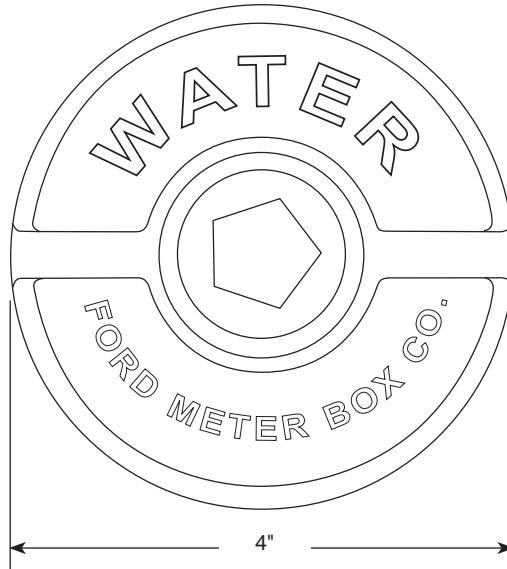


## SUBMITTAL INFORMATION

### Curb Box Lid - (PL-LID style)



#### PLUG TYPE PL LID FOR 1-1/4" UPPER SECTION



LID SIZE	APPROX. WT. LBS.	PART NUMBER	✓ SUBMITTED ITEM(S)
4"	1.9	PL-LID	

### FEATURES

- All brass components conform to AWWA Standard C800 (ASTM B62 and ASTM B584)
- Lid is cast iron per ASTM A48, Class 25
- Finish is black E-coating

The Ford Meter Box Company considers the information in this submittal form to be correct at the time of publication. Item and option availability, including specifications, are subject to change without notice. Please verify that your product information is current.



#### The Ford Meter Box Company, Inc.

P.O. Box 443, Wabash, Indiana U.S.A. 46992-0443

Phone: 260-563-3171 / Fax: 800-826-3487

Overseas Fax: 260-563-0167

www.fordmeterbox.com

05/07/15

Submitted By: