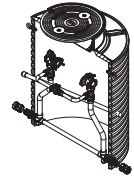


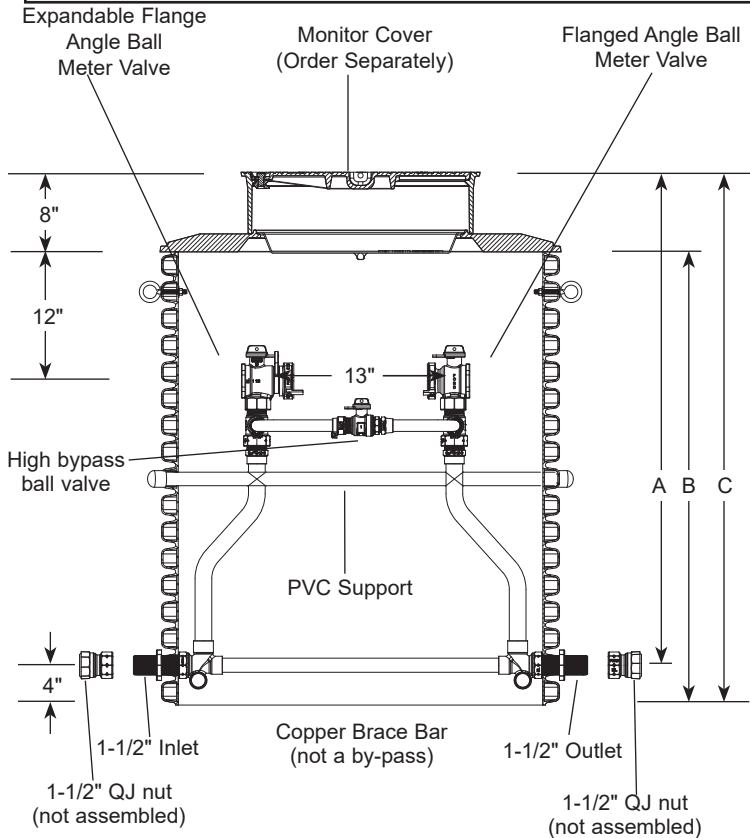
SUBMITTAL INFORMATION

Plastic Pitsetter - (PMBB-644-36HB-xx-EXPNAQNL style)



**QUICK JOINT FOR COPPER OR PLASTIC TUBING (CTS) INLET AND
OUTLET (SHIPPED UNASSEMBLED) - FOR 1-1/2" METER**

**MONITOR LID - EXPANDABLE FLANGE ANGLE BALL METER VALVE INLET
BY FLANGED ANGLE BALL METER VALVE OUTLET, WITH HIGH BYPASS**



Approximate Vertical Measurements (In.)

SERVICE LINE DEPTH "A"	PVC CYLINDER LENGTH "B"	TOTAL PIT DEPTH "C"
36	32	40
42	38	46
48	44	52
54	50	58
60	56	64
66	62	70
72	68	76
78	74	82

**Expandable Flange
Patent
18169305**

PIT DIAMETER AND DEPTH (IN.)	CATALOG NUMBER	✓ SUBMITTED ITEM(S)
36 x 36	PMBB-644-36HB-36-EXPNAQNL	
36 x 42	PMBB-644-36HB-42-EXPNAQNL	
36 x 48	PMBB-644-36HB-48-EXPNAQNL	
36 x 54	PMBB-644-36HB-54-EXPNAQNL	
36 x 60	PMBB-644-36HB-60-EXPNAQNL	
36 x 66	PMBB-644-36HB-66-EXPNAQNL	
36 x 72	PMBB-644-36HB-72-EXPNAQNL	
36 x 78	PMBB-644-36HB-78-EXPNAQNL	

Note: Meter spacing achieved when expandable flange is fully extended.

FEATURES

- All brass that comes in contact with potable water conforms to AWWA Standard C800 (ASTM B584, UNS C89833)
- The product has the letters "NL" cast into the main body for lead-free identification
- Brass components that do not come in contact with potable water conform to AWWA Standard C800 (ASTM B62 and ASTM B584, UNS C83600, 85-5-5-5)
- Certified to NSF/ANSI/CAN Standard 61 and NSF/ANSI/CAN Standard 372 where applicable
- Copper conforms to ASTM B75 or B88, UNS C12200
- All Ford® Setters are assembled with lead-free solder
- Meter is held rigidly and at the proper height for easy installation and removal
- Monitor cover is not included and must be ordered separately
- Service lines are a minimum of 2" from pit walls to prevent "frost jump" in colder climates
- Easy installation - simply make inlet and outlet connections and install cover
- When bottom of pit is below frost line, service and meter freeze-ups are greatly reduced or eliminated by the circulation of air from the warmer soil at the pit base

The Ford Meter Box Company considers the information in this submittal form to be correct at the time of publication. Item and option availability, including specifications, are subject to change without notice. Please verify that your product information is current. Our standard warranty applies.



The Ford Meter Box Company, Inc.

P.O. Box 443, Wabash, Indiana U.S.A. 46992-0443

Phone: 260-563-3171 / Fax: 800-826-3487

Overseas Fax: 260-563-0167

www.fordmeterbox.com

09/17/25

Submitted By: