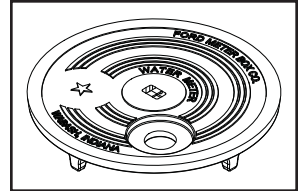
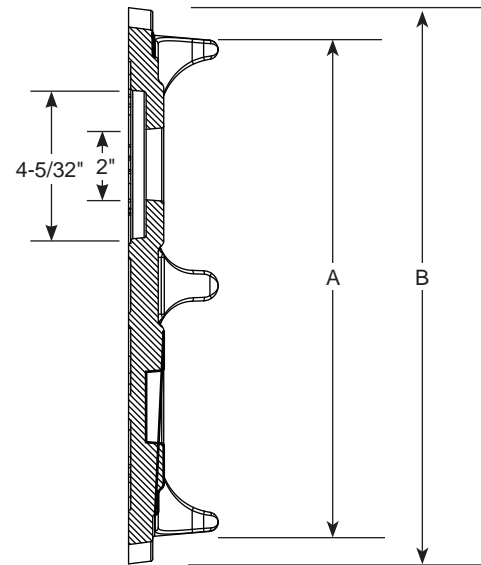
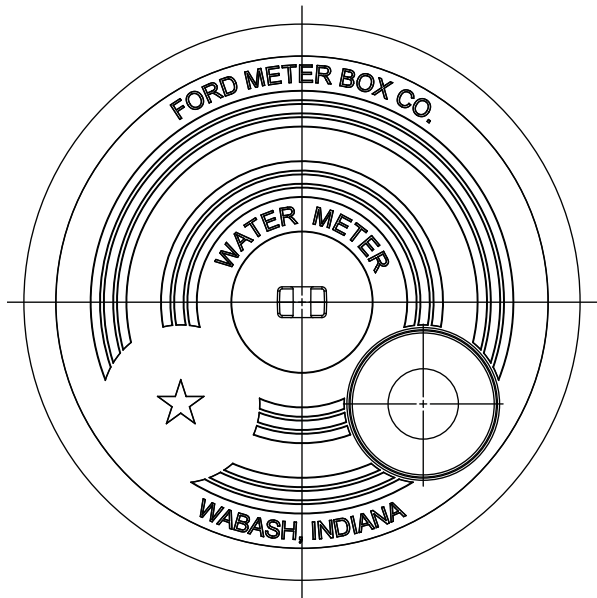


# SUBMITTAL INFORMATION

## Meter Box Covers - (PPSCH-15-REC-T style)



EXTRA HEAVY ONE-PIECE FLAT LOCKLESS COVER WITH RECESSED E-READ HOLE (NO SEPARATE TOP LID)



TILE I.D.	DIM. "A"	DIM. "B"	APPROX. WT. LBS.	DESCRIPTION	CATALOG NUMBER	✓ SUBMITTED ITEM
15"	14-1/4"	15-3/4"	40.5	One-Piece Lockless Flat Cover	PPSCH-15-REC-T	

## FEATURES

- 2" Precast hole (recessed) for electronic meter reading module
- Cast iron per ASTM A48, Class 25 with black e-coat finish

The Ford Meter Box Company considers the information in this submittal form to be correct at the time of publication. Item and option availability, including specifications, are subject to change without notice. Please verify that your product information is current.



### The Ford Meter Box Company, Inc.

P.O. Box 443, Wabash, Indiana U.S.A. 46992-0443

Phone: 260-563-3171 / Fax: 800-826-3487

Overseas Fax: 260-563-0167

www.fordmeterbox.com

12/11/15

Submitted By: