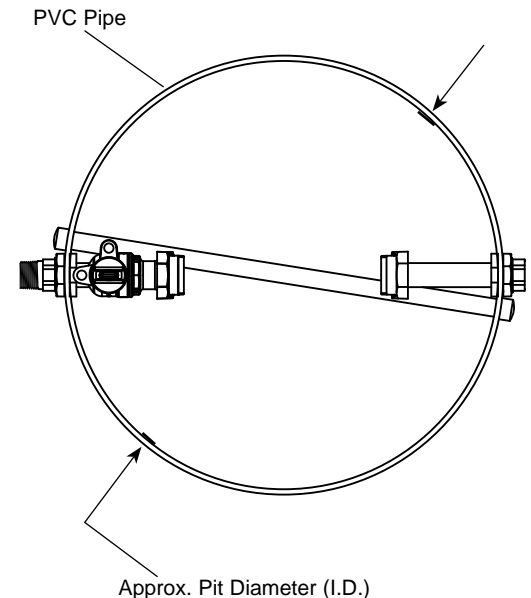
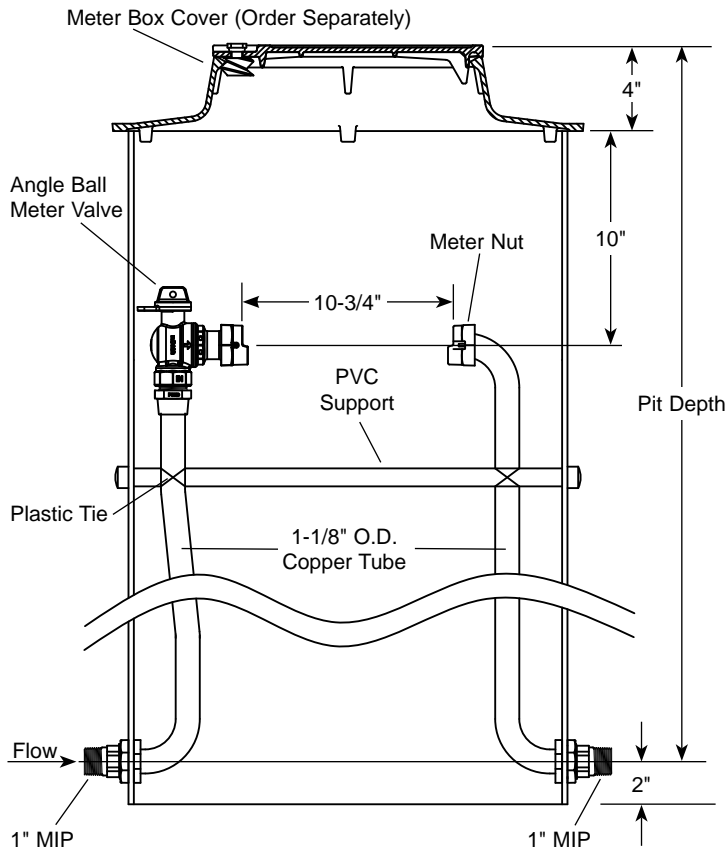


A schematic diagram of a gas boiler system. It shows a boiler with a bypass pump and a control valve. The pump is connected to the main circulation loop, and the control valve is used to regulate the flow of water through the boiler. The diagram illustrates the internal components and the flow paths of the heating system.

### SINGLE LID - FULL PORT ANGLE BALL METER VALVE INLET BY METER NUT OUTLET



PIT DIAMETER AND DEPTH	CATALOG NUMBER	✓ SUBMITTED ITEM(S)
20" x 42"	PSB-488-20-42-FP-NL	

Submitted By: