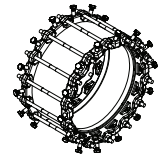
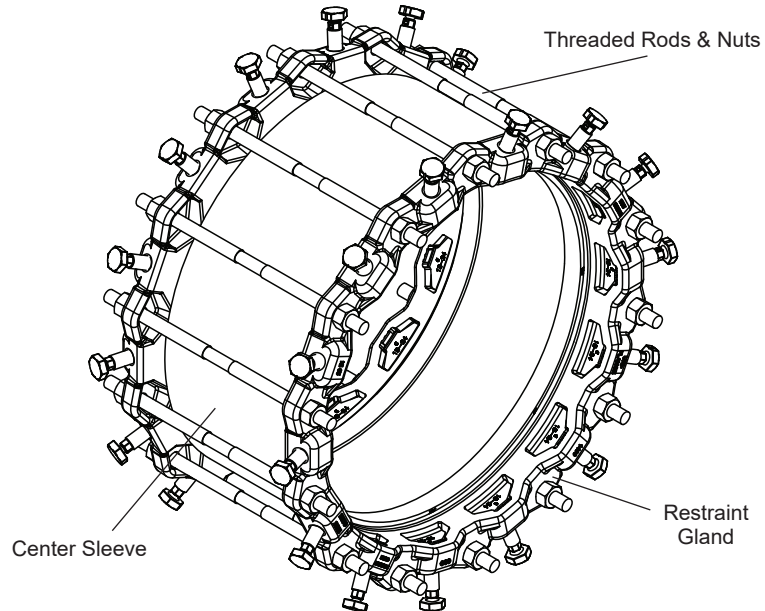
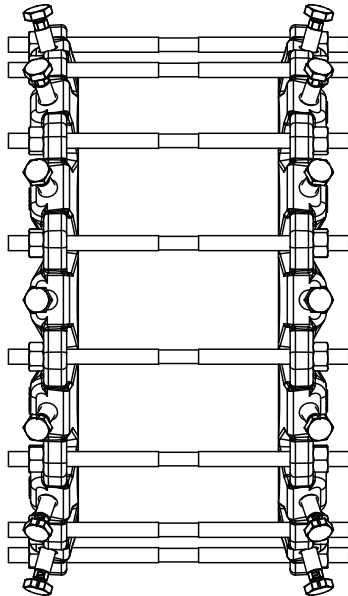


SUBMITTAL INFORMATION

Restrained Coupling for Ductile Iron Pipe - (RCDD-xx-Z-U100 style)



RESTRAINED COUPLING FOR DUCTILE IRON PIPE WITH 316 STAINLESS STEEL HARDWARE



NOMINAL PIPE SIZE (IN.)	PIPE O.D. RANGE (IN.)	SLEEVE LENGTH (IN.)	DEGREES DEFLECTION	No. OF RODS	SIZE OF RODS (IN.)	APPROX. WT. LBS	PART NUMBER	✓ SUBMITTED ITEM(S)
10	11.10	7	5°	6	3/4 x 17	130	RCDD-10-Z-U100	
12	13.20	7	5°	8	3/4 x 17	150	RCDD-12-Z-U100	
14	15.30	10	3°	10	3/4 x 17	173	RCDD-14-Z-U100	
16	17.40	10	3°	12	3/4 x 17	200	RCDD-16-Z-U100	
18	19.50	10	3°	12	3/4 x 17	230	RCDD-18-Z-U100	
20	21.60	10	3°	14	3/4 x 17	260	RCDD-20-Z-U100	
24	25.80	10	3°	16	3/4 x 17	320	RCDD-24-Z-U100	
30	32.00	10	1°	20	1 x 20	580	RCDD-30-Z-U100	
36	38.30	10	1°	24	1 x 20	654	RCDD-36-Z-U100	

FEATURES

- Center Sleeve - Carbon steel per ASTM A36, fusion bonded epoxy coating
- Restraint Gland Ends - Ductile iron per ASTM A536, Grade 65-45-12, e-coat epoxy
- Double End Rod & Nuts - Type 316 stainless steel per ASTM A193 and ASTM A194
- Gaskets - SBR rubber per ASTM D2000
- Rated at 350 psi for 10"-16" and 250 psi for 18"-36" with a minimum 2:1 safety factor, not to exceed pressure rating of pipe.
- Fabricated sleeve and imported ductile iron restraint castings
- Complies with AWWA C219
- Certified to NSF/ANSI 61
- 100% manufactured in the United States of America

The Ford Meter Box Company considers the information in this submittal form to be correct at the time of publication. Item and option availability, including specifications, are subject to change without notice. Please verify that your product information is current. Our standard warranty applies.



The Ford Meter Box Company, Inc.

P.O. Box 443, Wabash, Indiana U.S.A. 46992-0443

Phone: 260-563-3171 / Fax: 800-826-3487

Overseas Fax: 260-563-0167

www.fordmeterbox.com

08/08/25

Submitted By: