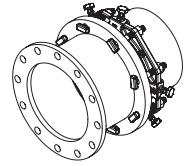
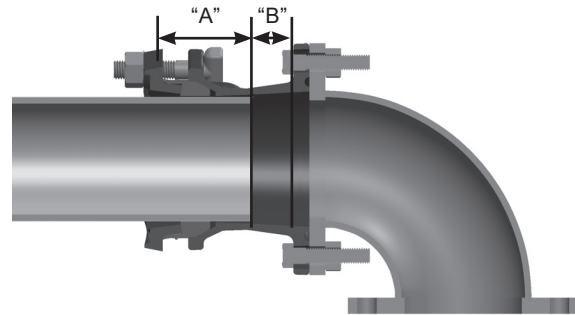
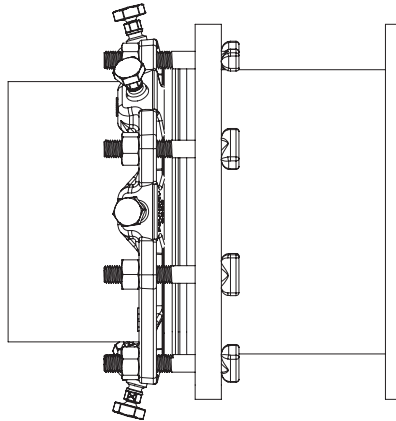


SUBMITTAL INFORMATION

Restrained Flange Adapter - (RFAP-xxxx-DxxZ-U100 style)



RESTRAINED ADAPTER FOR CONVERTING PLAIN END PIPE TO A FLANGE CONNECTION FOR C905 PVC AND HDPE PIPE WITH 316 STAINLESS STEEL HARDWARE AND EPOXY COATING



| NOM. PIPE SIZE (IN.) | PIPE OD | PART NUMBER | NUMBER OF RESTRAINT SEGMENTS | BOLT SIZE (IN.) | BOLT QTY. | *MINIMUM PIPE INSERTION DIMENSION "A" (IN.) | *PIPE ADJUSTABILITY DIMENSION "B" (IN.) | MAX. DEFLECTION ALLOWANCE | APPROX. WT. LBS | ✓ SUBMITTED ITEM(S) |
|----------------------|-------------|---------------------|------------------------------|-----------------|-----------|---|---|---------------------------|-----------------|---------------------|
| 10 | 10.50-11.10 | RFAP-1110-D10Z-U100 | 6 | 3/4 x 4-1/2 | 8 | 4-3/4 | 3-3/4 | 5° | 80 | |
| 12 | 12.50-13.20 | RFAP-1320-D12Z-U100 | 8 | 3/4 x 4-1/2 | 8 | 4-3/4 | 3-3/4 | 5° | 100 | |

*Not accounting for beveled, unsquare or deflected pipe ends

FEATURES

- Sleeve - Carbon steel per ASTM A36
- Flange - Class D AWWA C207
- Restraint gland - Ductile iron per ASTM A536, black e-coat epoxy with red top coat
- Restraint actuating screws and segments - Ductile iron per ASTM A536 with auto-tork break away head design, black e-coat epoxy
- Bolts and nuts - Type 316 stainless steel per ASTM A193 and A194
- Gasket - SBR rubber per ASTM D2000
- Finish - Fusion bonded epoxy coating
- Rated at 150 PSI
- Certified to ANSI/NSF 61
- 100% manufactured in the United States of America

The Ford Meter Box Company considers the information in this submittal form to be correct at the time of publication. Item and option availability, including specifications, are subject to change without notice. Please verify that your product information is current. Our standard warranty applies.



The Ford Meter Box Company, Inc.

P.O. Box 443, Wabash, Indiana U.S.A. 46992-0443

Phone: 260-563-3171 / Fax: 800-826-3487

Overseas Fax: 260-563-0167

www.fordmeterbox.com

08/07/25

Submitted By: