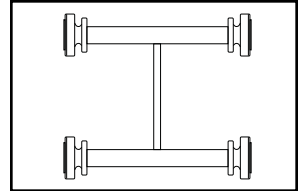
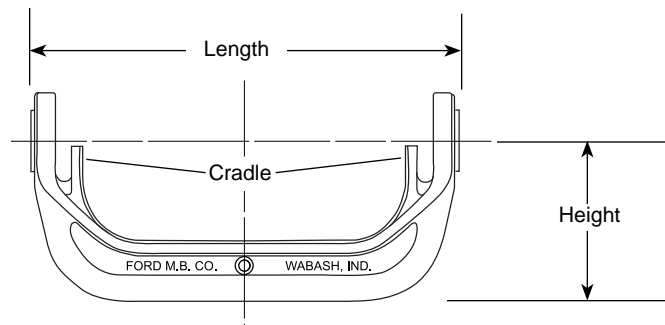
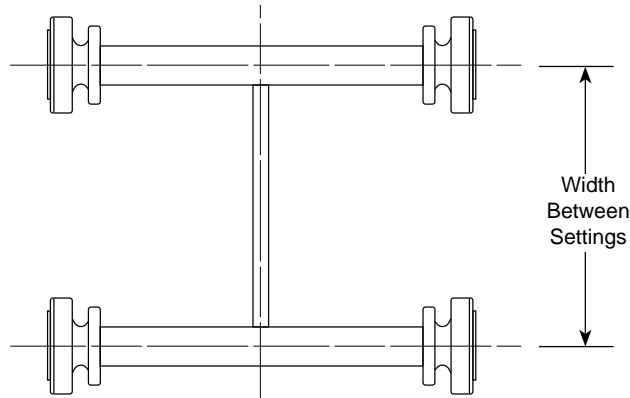


# SUBMITTAL INFORMATION

## Frame for Twin Yoke Setter - (TYF-x style)



500 SERIES TWIN IRON YOKE BARS FOR 5/8" THROUGH 1" METERS



METER SIZE	LENGTH	HEIGHT	WIDTH	APPROX. Wt. LBS.	CATALOG NUMBER	✓ SUBMITTED ITEM(S)
5/8"	10-15/16"	4-1/8"	7"	7.5	TYF-1	
5/8"x3/4"	10-15/16"	4-1/8"	7"	8.9	TYF-2	
3/4"	12-1/2"	4-1/8"	7"	9.1	TYF-3	
1"	14-3/4"	5-1/4"	9"	14.8	TYF-4	

## FEATURES

- Material: Cast gray iron, ASTM A48-92, Class 25
- Yoke Bar Finish: Black E-coating
- Cradle positions the meter in line with end connections for one-hand installation.

The Ford Meter Box Company considers the information in this submittal form to be correct at the time of publication. Item and option availability, including specifications, are subject to change without notice. Please verify that your product information is current.



### The Ford Meter Box Company, Inc.

P.O. Box 443, Wabash, Indiana U.S.A. 46992-0443

Phone: 260-563-3171 / Fax: 800-826-3487

Overseas Fax: 260-563-0167

<http://www.fordmeterbox.com>

11/02/09

Submitted By: