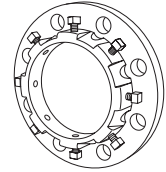


# SUBMITTAL INFORMATION

## Adapter Flange - (UFA200-C-x-SS-N style)



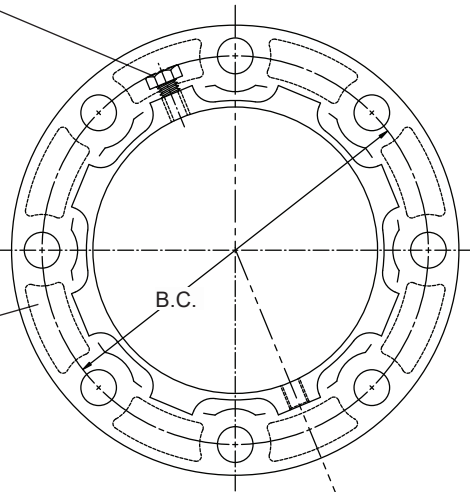
### UNI-FLANGE® SERIES 200 ADAPTER FLANGE FOR DUCTILE IRON PIPE

Set Screw - Type 410 Stainless  
Steel Heat Treated to 35-40  
Rockwell C

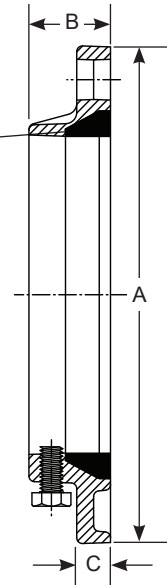
Flange - Ductile Iron per  
ASTM A536, Grade 65-45-12.  
Drilling to AWWA Class D and  
E, ANSI B16.1 (125 lb.), or  
ANSI B16.5 (150 lb.)

Finish - Shop coat

Color Code - Red for ductile  
iron applications



Gasket - NBR (Buna-N)  
Mechanical Joint Gasket



| NOM.<br>PIPE<br>SIZE | DUCTILE IRON PIPE |                  | APPROX.<br>WT.<br>LBS. | PRESSURE<br>RATING<br>PSI | SET SCREWS |             | FLANGE  |                |                | NO. OF<br>BOLT<br>HOLES | BOLT<br>CIRCLE<br>DIA. | ✓ SUBMITTED<br>ITEM(S) |
|----------------------|-------------------|------------------|------------------------|---------------------------|------------|-------------|---------|----------------|----------------|-------------------------|------------------------|------------------------|
|                      | OD<br>(IN.)       | CATALOG No.      |                        |                           | NUMBER     | SIZE        | OD<br>A | THICKNESS<br>B | THICKNESS<br>C |                         |                        |                        |
| 2"                   | 2.50              | UFA200-C-2-SS-N  | 4.2                    | 200                       | 2          | 1/2"x1"     | 6"      | 1-13/16"       | 3/4"           | 4                       | 4-3/4"                 |                        |
| 3"                   | 3.96              | UFA200-C-3-SS-N  | 6.0                    | 200                       | 4          | 1/2"x1"     | 7-1/2"  | 1-13/16"       | 3/4"           | 4                       | 6"                     |                        |
| 4"                   | 4.80              | UFA200-C-4-SS-N  | 8.5                    | 200                       | 4          | 1/2"x1"     | 9"      | 1-13/16"       | 3/4"           | 8                       | 7-1/2"                 |                        |
| 6"                   | 6.90              | UFA200-C-6-SS-N  | 10.7                   | 200                       | 8          | 1/2"x1"     | 11"     | 1-13/16"       | 3/4"           | 8                       | 9-1/2"                 |                        |
| 8"                   | 9.05              | UFA200-C-8-SS-N  | 19.6                   | 200                       | 8          | 5/8"x1-1/4" | 13-1/2" | 2-1/4"         | 22/25"         | 8                       | 11-3/4"                |                        |
| 10"                  | 11.10             | UFA200-C-10-SS-N | 25.3                   | 175                       | 12         | 5/8"x1-1/4" | 16"     | 2-15/16"       | 1"             | 12                      | 14-1/4"                |                        |
| 12"                  | 13.20             | UFA200-C-12-SS-N | 33.2                   | 175                       | 12         | 5/8"x1-1/4" | 19"     | 2-15/16"       | 1"             | 12                      | 17"                    |                        |

### FEATURES

- Restraint is provided by a set screw locking device similar to that used in mechanical joint retainer glands
- The gasket is an NBR (Buna-N) mechanical joint gasket
- Designed for ease of on-site installation. Eliminates bolt hole alignment problems and allows for pipe deflection
- Series 200 adapter flanges are not recommended for use on PVC pipe. Use the Uni-Flange® Series 900 flanges instead

The Ford Meter Box Company considers the information in this submittal form to be correct at the time of publication. Item and option availability, including specifications, are subject to change without notice. Please verify that your product information is current. Our standard warranty applies.



**The Ford Meter Box Company, Inc.**  
P.O. Box 443, Wabash, Indiana U.S.A. 46992-0443  
Phone: 260-563-3171 / Fax: 800-826-3487  
Overseas Fax: 260-563-0167  
www.fordmeterbox.com

09/16/22

Submitted By: