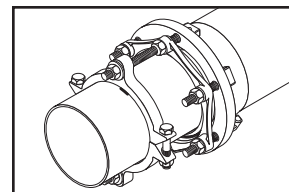
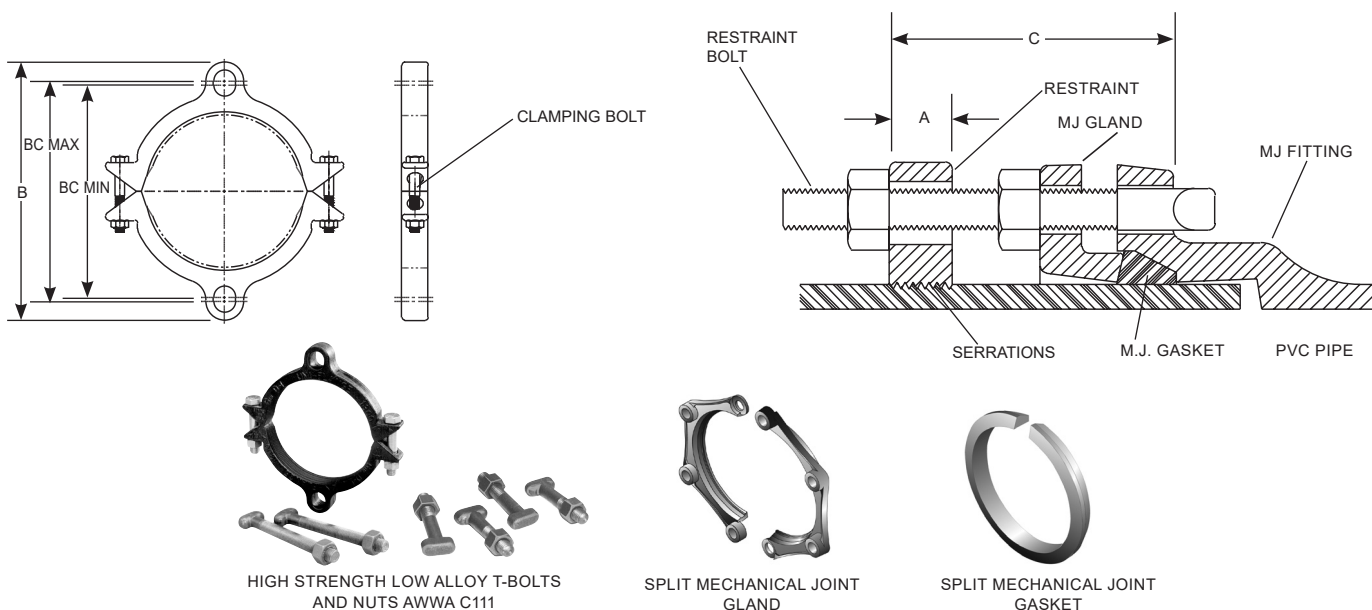


SUBMITTAL INFORMATION

Uni-Flange® Restraint - (UFR1300-SAS-x-I style)



SERIES 1300-SA 2"-12" RESTRAINT (WITH ACCESSORIES) FOR PVC PIPE OR HDPE PIPE



NOM. PIPE SIZE	OD (IN.)	CATALOG NUMBER	A	B APPROX.	C MAX	RESTRAINING BOLTS / RODS		CLAMPING BOLTS		BC MIN	BC MAX	APPROX. WEIGHT LBS.	✓ SUBMITTED ITEMS
						No.	SIZE	No.	SIZE				
2"	2.38	UFR1300-SAS-2-I	1-1/8"	6-3/8"	4"	2	5/8" x 5"	2	5/8" x 3-1/2"	4.38"	4.75"	6.3	
2-1/2"	2.88	UFR1300-SAS-25-I	1-1/8"	6-7/8"	4"	2	5/8" x 5"	2	5/8" x 3-1/2"	5.13"	5.38"	6.5	
3"	3.50	UFR1300-SAS-3-I	1-1/8"	7-5/8"	4"	2	5/8" x 5"	2	5/8" x 3-1/2"	5.81"	6.19"	7.4	
4"	4.50	UFR1300-SAS-4-I	1-1/8"	9-1/8"	6"	2	3/4" x 7"	2	5/8" x 3-1/2"	7.13"	7.50"	8.5	
6"	6.63	UFR1300-SAS-6-I	1-1/8"	11-1/8"	6"	2	3/4" x 7"	2	5/8" x 3-1/2"	9.13"	9.50"	10.0	
8"	8.63	UFR1300-SAS-8-I	1-1/4"	14-7/16"	6"	2	3/4" x 7"	2	3/4" x 4"	11.75"	12.75"	15.5	
10"	10.75	UFR1300-SAS-10-I	1-3/8"	16-5/8"	6"	4	3/4" x 7"	2	7/8" x 5"	13.50"	15.00"	26.5	
12"	12.75	UFR1300-SAS-12-I	1-3/8"	19-1/4"	6"	4	3/4" x 7"	2	7/8" x 5"	15.63"	17.63"	28.5	

FEATURES

- Cast ductile iron per ASTM A536 grade 65-45-12
- Black e-coat epoxy coating (NSF 61 approved) with gray painted top coat for identification
- 360° contact and support of the pipe wall
- T-Bolts (included) - High strength, low alloy steel ANSI / AWWA C111 / A21.11
- Side Clamping Bolts and Nuts - Grade 5, zinc-plated
- Rated at full-rated pressure of any class of PVC pipe or HDPE (SDR 9 through SDR26 with the use of a proper insert stiffener); minimum 2:1 safety factor

The Ford Meter Box Company considers the information in this submittal form to be correct at the time of publication. Item and option availability, including specifications, are subject to change without notice. Please verify that your product information is current. Our standard warranty applies.



The Ford Meter Box Company, Inc.

P.O. Box 443, Wabash, Indiana U.S.A. 46992-0443
 Phone: 260-563-3171 / Fax: 800-826-3487
 Overseas Fax: 260-563-0167
 www.fordmeterbox.com



12/02/21

Submitted By: