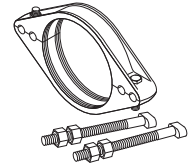


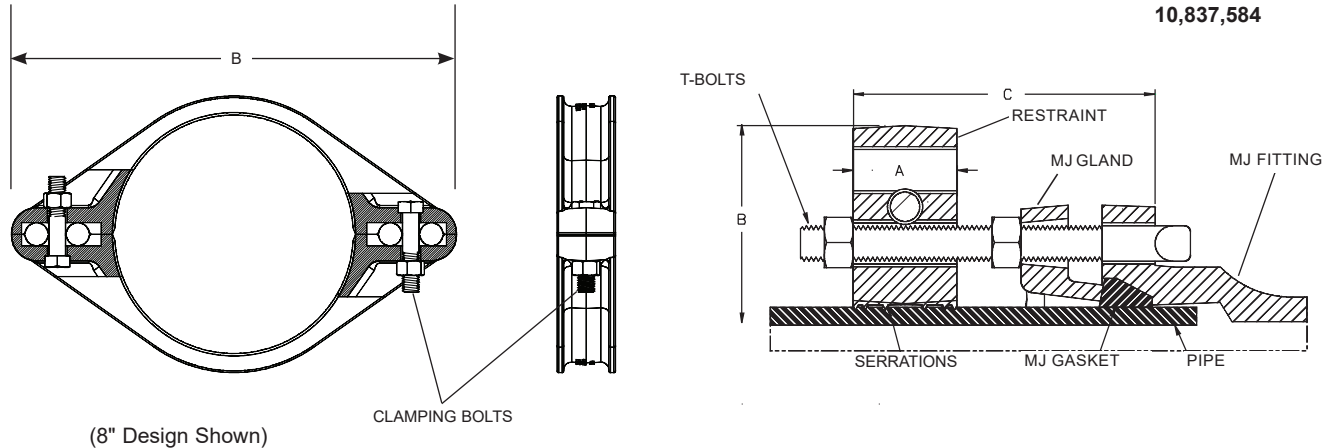
# SUBMITTAL INFORMATION

## Uni-Flange® Restraint - (UFR1309-C-x-X-I style)



UNI-FLANGE SERIES 1309-C RESTRAINT HARNESS (WITH 304 STAINLESS STEEL HARDWARE) FOR C900 PVC, C909 PVC AND C906 HDPE PIPE FOR MECHANICAL JOINT / PUSH-ON FITTINGS

PATENT  
10,837,584



NOM PIPE SIZE	PVC PIPE WITH DUCTILE IRON PIPE OD STYLE 1309-C		A	B APPROX	C MAX	T-BOLTS		CLAMPING BOLTS		BC MIN	BC MAX	APPROX. WT. LBS.	✓ SUBMITTED ITEMS
	OD (IN.)	CATALOG No				No.	SIZE	No.	SIZE				
4"	4.80	UFR1309-C-4-X-I	2-13/64"	10-13/16"	7"	2	3/4" x 9"	2	5/8" x 2-1/2"	7.50"	7.50"	10.00	
6"	6.90	UFR1309-C-6-X-I	2-13/64"	12-13/16"	7"	2	3/4" x 9"	2	5/8" x 2-1/2"	9.50"	9.50"	11.22	
8"	9.05	UFR1309-C-8-X-I	2-13/64"	16-47/64"	7"	2	3/4" x 9"	2	5/8" x 3"	11.75"	14.85"	17.62	
10"	11.10	UFR1309-C-10-X-I	2-1/4"	19-1/16"	7"	4	3/4" x 9"	2	5/8" x 3"	14.00"	15.00"	29.46	
12"	13.20	UFR1309-C-12-X-I	2-13/64"	21-3/8"	7"	4	3/4" x 9"	2	5/8" x 3"	16.25"	17.50"	34.67	

### FEATURES

- Cast ductile iron per ASTM A526 grade 65-45-12
- T-bolts, clamping bolts and nuts included are type 304 stainless steel per ASTM A193 and ASTM A194
- Clamping pads and tie rod lugs co-located so installer doesn't have to work under the pipe.
- Rated at full-rated pressure of any class of C900 and C909 PVC pipe, minimum 2:1 safety factor
- Rated at full-rated pressure of any class of C906 HDPE pipe (provided an insert is used)
- Black Armorguard e-coat applied epoxy
- 360° contact and support of the pipe wall
- Designed to accommodate push-on fittings with restraining ears

The Ford Meter Box Company considers the information in this submittal form to be correct at the time of publication. Item and option availability, including specifications, are subject to change without notice. Please verify that your product information is current. Our standard warranty applies.



**The Ford Meter Box Company, Inc.**  
P.O. Box 443, Wabash, Indiana U.S.A. 46992-0443  
Phone: 260-563-3171 / Fax: 800-826-3487  
Overseas Fax: 260-563-0167  
www.fordmeterbox.com

08/30/23

Submitted By: