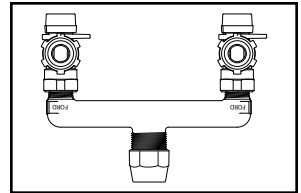
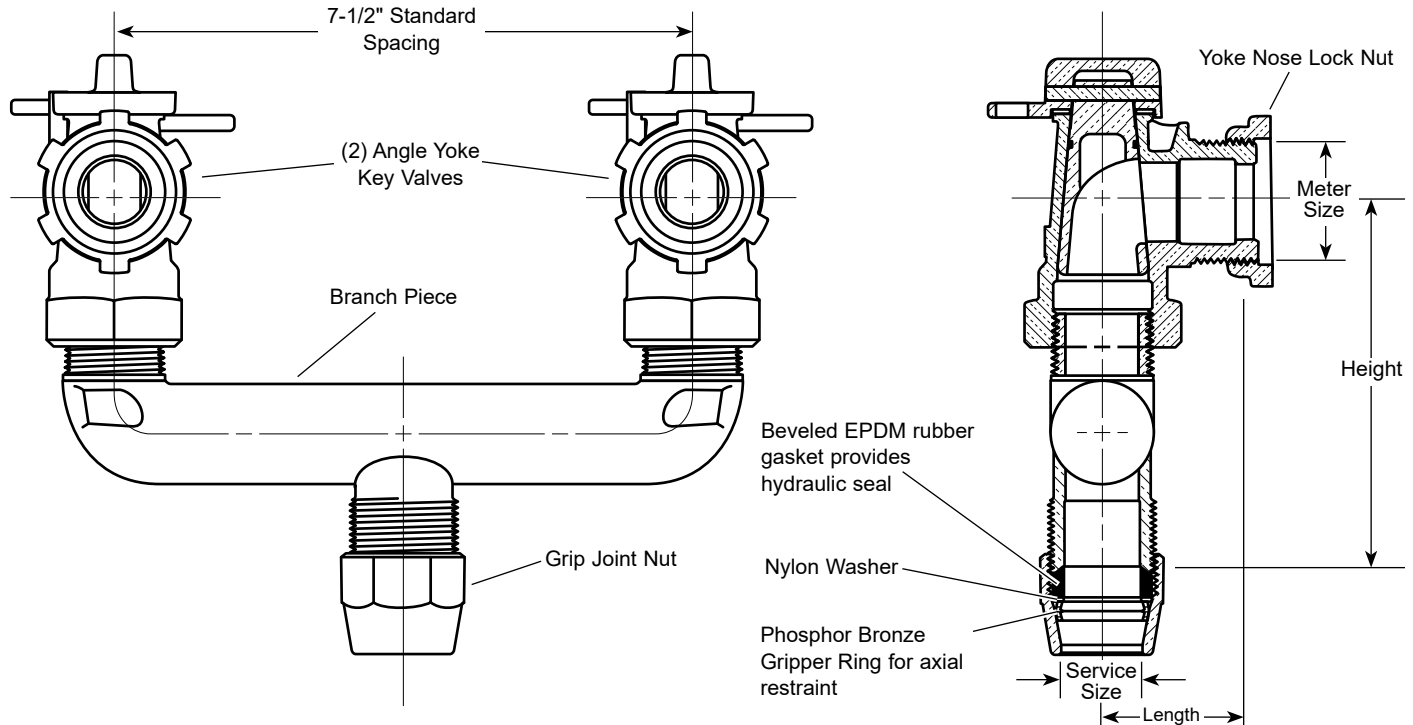


SUBMITTAL INFORMATION

Key Yoke Valve Branch Assembly - (UV69-42W-G-NL style)



GRIP JOINT FOR POLYETHYLENE PIPE (SIDR7 PEP) INLET BY TWO METER YOKE NOSE OUTLETS



SERVICE SIZE	METER SIZE	LENGTH	HEIGHT	APPROX. WT. LBS.	Components		Assembly CATALOG NUMBER	✓ SUBMITTED ITEM(S)
					BRANCH. PIECE	VALVES (2)		
1"	5/8" x 3/4" or 3/4"	1-3/8"	4-5/16"	4.8	U68-43-G-NL	AV91-323W-NL	UV69-42W-G-NL	

Note: Ford recommends using insert stiffeners with plastic pipe and tubing.

FEATURES

- All brass that comes in contact with potable water conforms to AWWA Standard C800 (ASTM B584, UNS C89833)
- The product has the letters "NL" cast into the main body for lead-free identification
- Brass components that do not come in contact with potable water conform to AWWA Standard C800 (ASTM B62 and ASTM B584, UNS C83600, 85-5-5-5)
- All branch valve assemblies have padlock wings
- Meets 100 psi pressure requirements of AWWA Standard C800
- EPDM rubber yoke nose gasket sold separately: GT-112 (5/8"), GT-118 (3/4") and GT-123 (1")

The Ford Meter Box Company considers the information in this submittal form to be correct at the time of publication. Item and option availability, including specifications, are subject to change without notice. Please verify that your product information is current. Our standard warranty applies.



The Ford Meter Box Company, Inc.
P.O. Box 443, Wabash, Indiana U.S.A. 46992-0443
Phone: 260-563-3171 / Fax: 800-826-3487
Overseas Fax: 260-563-0167
www.fordmeterbox.com

03/24/20

Submitted By: