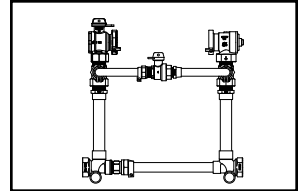


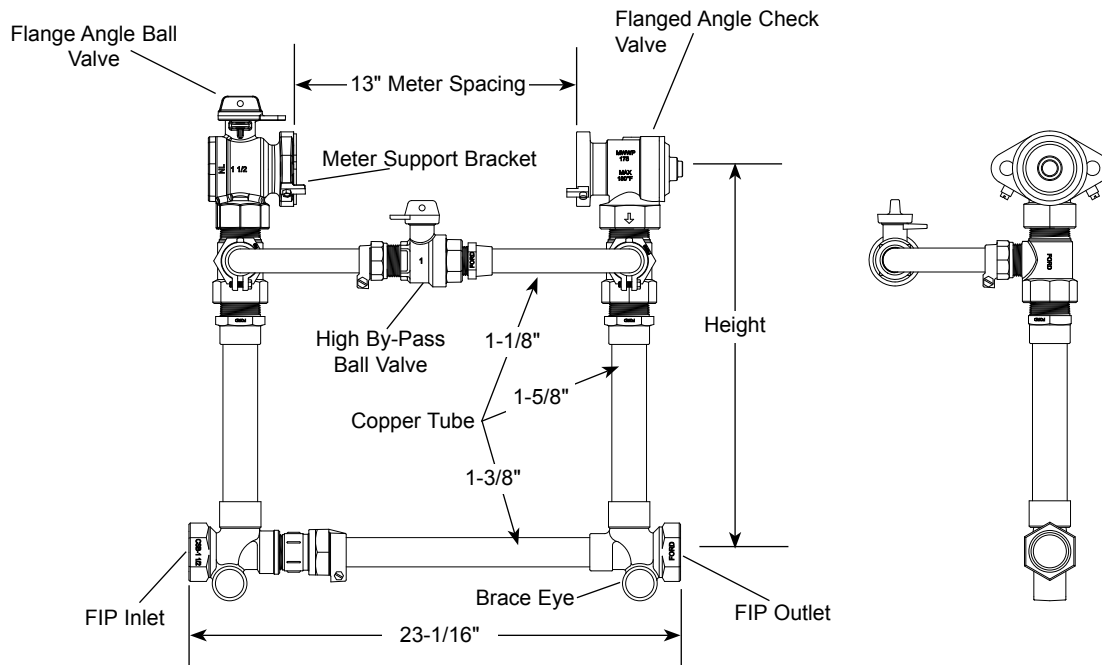
SUBMITTAL INFORMATION

70 Series Coppersetter - (VBH76-xxHB-11-66-NL style)



FLANGED ANGLE BALL VALVE BY ANGLE CHECK VALVE (1-1/2" METER)

FEMALE IRON PIPE THREAD INLET AND OUTLET



SERVICE LINE CONNECTION		HEIGHT	APPROX. Wt. LBS.	CATALOG NUMBER	✓ SUBMITTED ITEM(S)
FIP INLET	FIP OUTLET				
1-1/2"	1-1/2"	12"	33.0	VBH76-12HB-11-66-NL	
		15"	33.5	VBH76-15HB-11-66-NL	
		18"	34.2	VBH76-18HB-11-66-NL	
		21"	35.0	VBH76-21HB-11-66-NL	
		24"	35.7	VBH76-24HB-11-66-NL	
		27"	36.4	VBH76-27HB-11-66-NL	

FEATURES

- All brass that comes in contact with potable water conforms to AWWA Standard C800 (ASTM B584, UNS C89833)
- The product has the letters "NL" cast into the main body for lead-free identification
- Brass components that do not come in contact with potable water conform to AWWA Standard C800 (ASTM B62 and ASTM B584, UNS C83600, 85-5-5-5)
- Constructed with Type K Copper
- Copper conforms to ASTM B88, UNS C12200
- Bracing eyes are standard
- Meter support brackets are standard
- All Ford Meter Setters are assembled with lead-free solder
- Padlock wing is standard on all angle meter ball valves or key valves
- 1-5/8" O.D. copper risers provide more flow capacity
- High by-pass bar offers easy access to the by-pass ball valve

The Ford Meter Box Company considers the information in this submittal form to be correct at the time of publication. Item and option availability, including specifications, are subject to change without notice. Please verify that your product information is current.



The Ford Meter Box Company, Inc.

P.O. Box 443, Wabash, Indiana U.S.A. 46992-0443

Phone: 260-563-3171 / Fax: 800-826-3487

Overseas Fax: 260-563-0167

www.fordmeterbox.com

06/02/17

Submitted By: