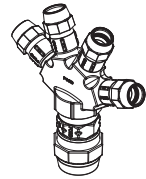
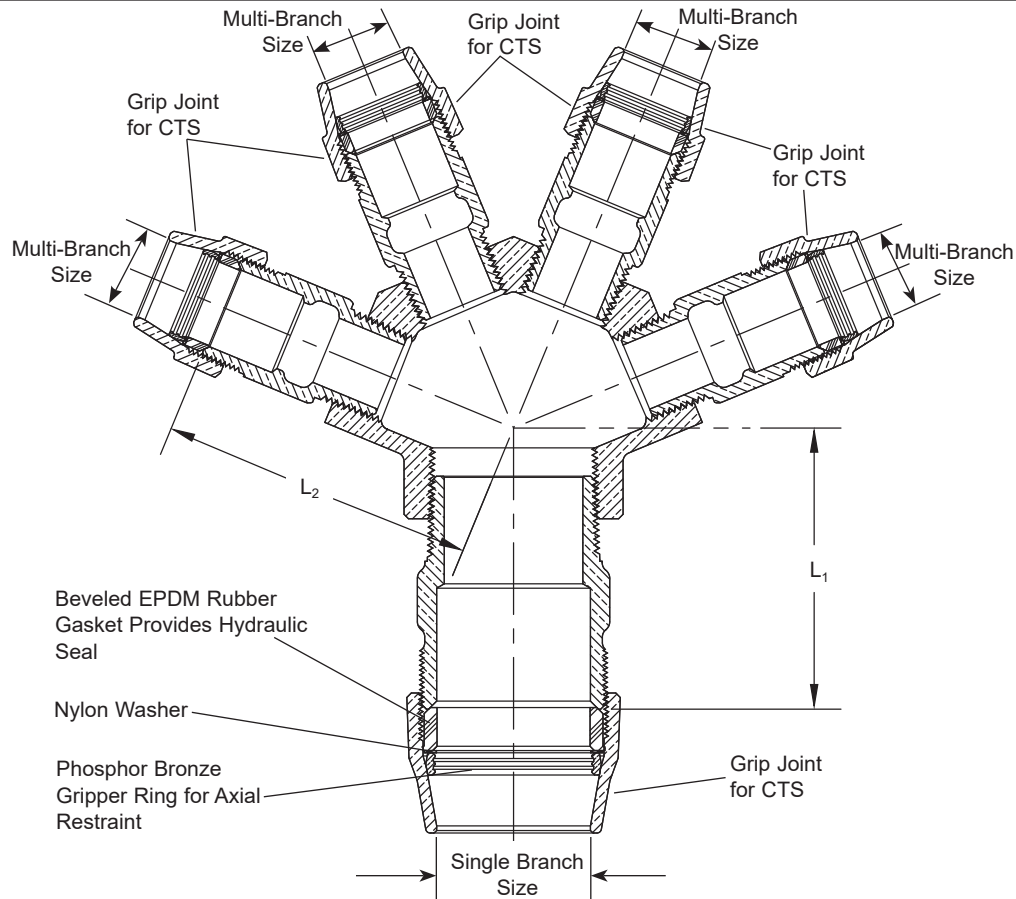


SUBMITTAL INFORMATION

Grip Joint 'Y' Branch - (Y44-474-AWT-G-NL style)



GRIP JOINT FOR COPPER OR PLASTIC TUBING (CTS) ALL ENDS - ASSEMBLED WATERTIGHT



SINGLE BRANCH END	MULTI-BRANCH END	SINGLE BRANCH LENGTH (L ₁)	MULTI-BRANCH LENGTH (L ₂)	APPROX. WT. LBS.	PART NUMBER	✓ SUBMITTED ITEM(S)
2"	Four - 1"	3-59/64"	4-27/64"	9.1	Y44-474-AWT-G-NL	

Note: Ford recommends using insert stiffeners with plastic pipe or tubing.

FEATURES

- All brass that comes in contact with potable water conforms to AWWA Standard C800 (ASTM B584, UNS C89833)
- The product has the letters "NL" cast into the main body for lead-free identification
- Brass components that do not come in contact with potable water conform to AWWA Standard C800 (ASTM B62 and ASTM B584, UNS C83600, 85-5-5-5)
- Ends are integral or secured with adhesive to prevent unintentional disassembly

The Ford Meter Box Company considers the information in this submittal form to be correct at the time of publication. Item and option availability, including specifications, are subject to change without notice. Please verify that your product information is current. Our standard warranty applies.



The Ford Meter Box Company, Inc.
P.O. Box 443, Wabash, Indiana U.S.A. 46992-0443
Phone: 260-563-3171 / Fax: 800-826-3487
Overseas Fax: 260-563-0167
www.fordmeterbox.com

10/15/21

Submitted By: