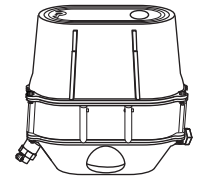


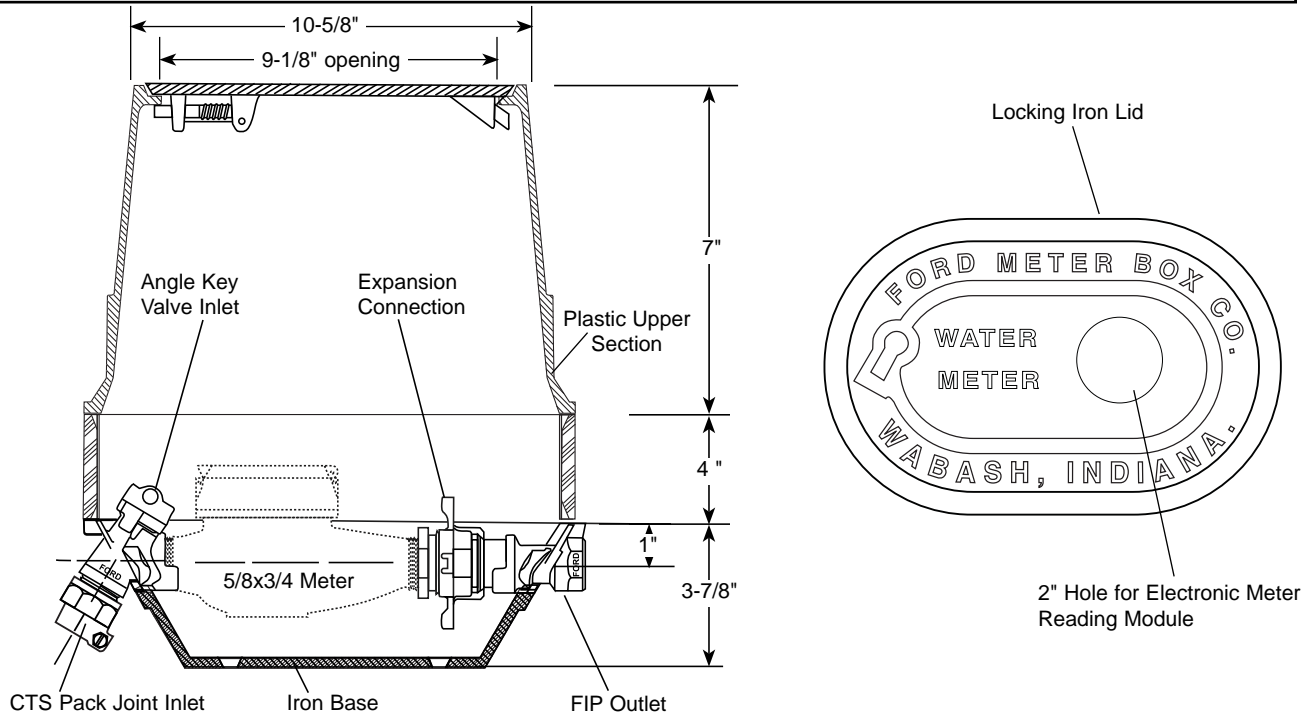
SUBMITTAL INFORMATION

Yokebox - (YLP241-2xx-P4-T-NL style)



PACK JOINT FOR COPPER OR PLASTIC TUBING (CTS) INLET BY FEMALE IRON PIPE THREAD OUTLET

ANGLE KEY VALVE BY STRAIGHT OUTLET



METER SIZE	CTS PJ INLET	FIP OUTLET	APPROX. Wt. LBS.	CATALOG NUMBER	✓ SUBMITTED ITEM(S)
5/8" x 3/4"	3/4"	3/4"	35.0	YLP241-233-P4-T-NL	
	1"	3/4"	34.0	YLP241-243-P4-T-NL	

Note: Ford recommends using insert stiffeners with plastic pipe and tubing.

FEATURES

- All brass that comes in contact with potable water conforms to AWWA Standard C800 (UNS NO C89833)
- The product has the letters "NL" cast into the main body for proper identification
- Brass components that do not come in contact with potable water conform to AWWA Standard C800 (ASTM B-62 and ASTM B-584, UNS NO C83600 - 85-5-5-5)
- Base and lid are cast iron per ASTM A48, Class 25
- Plastic upper section
- The brass end fittings are permanently and properly spaced and aligned for the meter
- Finish is black E-coating
- Locking lid is standard
- Lockless lid is available; add "-LL" to catalog number. Example: YLP241-233-P4-LL-T-NL
- High impact polystyrene structural foam 4" riser

The Ford Meter Box Company considers the information in this submittal form to be correct at the time of publication. Item and option availability, including specifications, are subject to change without notice. Please verify that your product information is current.



The Ford Meter Box Company, Inc.
P.O. Box 443, Wabash, Indiana U.S.A. 46992-0443
Phone: 260-563-3171 / Fax: 800-826-3487
Overseas Fax: 260-563-0167
www.fordmeterbox.com

10/24/14

Submitted By: